



**CUSCINETTI
A RULLI CILINDRICI
PER ONDULATORI**



**ROLLER BEARINGS
FOR CORRUGATORS**




**ZYLINDERROLLENLAGER FÜR
WELLPAPPENMASCHINEN**



**ROULEMENTS
A ROULEUX CYLINDRIQUES
POUR ONDULEUSES**






 FARO, moderna realtà industriale è lieta di presentare nel seguente catalogo la gamma produttiva di cuscinetti a rulli cilindrici per supporti di cilindri ondulatori destinati ai più noti tipi di macchine che producono cartone ondulato.

Nel corso degli ultimi anni l'evoluzione tecnologica di queste macchine ha posto alla FARO la necessità di rivedere i concetti progettuali e costruttivi dando luogo ad un restyling di questi cuscinetti che è già operativo.

Alla disponibilità dei cuscinetti FARO, qui di seguito riportati con indicate le dimensioni di ingombro, il valore del giuoco radiale e il riferimento originale del cuscinetto o il tipo di ondulatori, si affianca un servizio di consulenza tecnica in grado di sviluppare nuove soluzioni su richiesta specifica dei clienti.


 In the enclosed catalogue, FARO of Italy shows the updated production range of its line of cylindrical roller bearings for corrugating rolls, suitable to be fitted in the most common corrugator types.

Recent technical developments for this kind of machines has induced FARO to undertake a complete redesign of these bearings to meet and satisfy the new end-users requirements.

In addition to the informations included in this catalogue, FARO technical dept. is available to study tailor-made solutions upon request.






 FARO, in ihrer Eigenschaft als moderne industrielle Produktionsstätte, freut sich hiermit, ihre Angebotspalette an Zylinderrollenlager fuer Unterlagen von Wellpappen-Zylinder fuer die handelsüblicheren Wellpappenmaschinen vorzustellen.

In den letzten Jahren hat die technologische Entwicklung dieser Anlagen FARO veranlasst, die Projekt- und Konstruktionsgrundlagen zu überprüfen, was zu einer bereits eingesetzten Neugestaltung dieser Lager geführt hat.

Neben der Lieferfähigkeit der FARO-Lager (nachstehend mit Angabe der Ausmassen, des Radialluftwerts und der Originallager-referenznummer bzw. des Maschinentyps angegeben), bieten wir einen technischen Beratungsdienst an, der in der Lage ist, neue Lösungen auf Kundenwunsch zu entwickeln.

 FARO, industrie de pointe, est heureuse de vous présenter dans ce catalogue sa gamme de roulements à rouleaux cylindriques, destinés aux onduleuses et notamment aux plus performantes.

Durant ces dernières années l'évolution technologique de ces machines a incité FARO à revoir l'idée de projet et de fabrication afin d'optimiser la fiabilité et le concept de ces roulements déjà opérationnels.

Vous trouverez de suite la disponibilité des roulements FARO, la valeur du jeu radial ainsi que la référence originale ou le type d'onduleuse.

Nous proposons également un service d'avis d'expert technique afin de développer de nouvelles solutions pour toutes demandes spécifiques.






Faro S.r.l.

Via Torino, 19 Zona Industriale
 29010 Calendasco (PC) Italy
 Tel. +39 0523 769849
 Fax. +39 0523 760315
 e-mail: sales@faro-spa.it

FARO USA Inc

6208 CLARK CENTER AVENUE Sarasota,
 Florida 34231
 Phone: +1 941 9253004
 Fax: +1 305 489 7814
 e-mail: gcambiati@farobearings.com



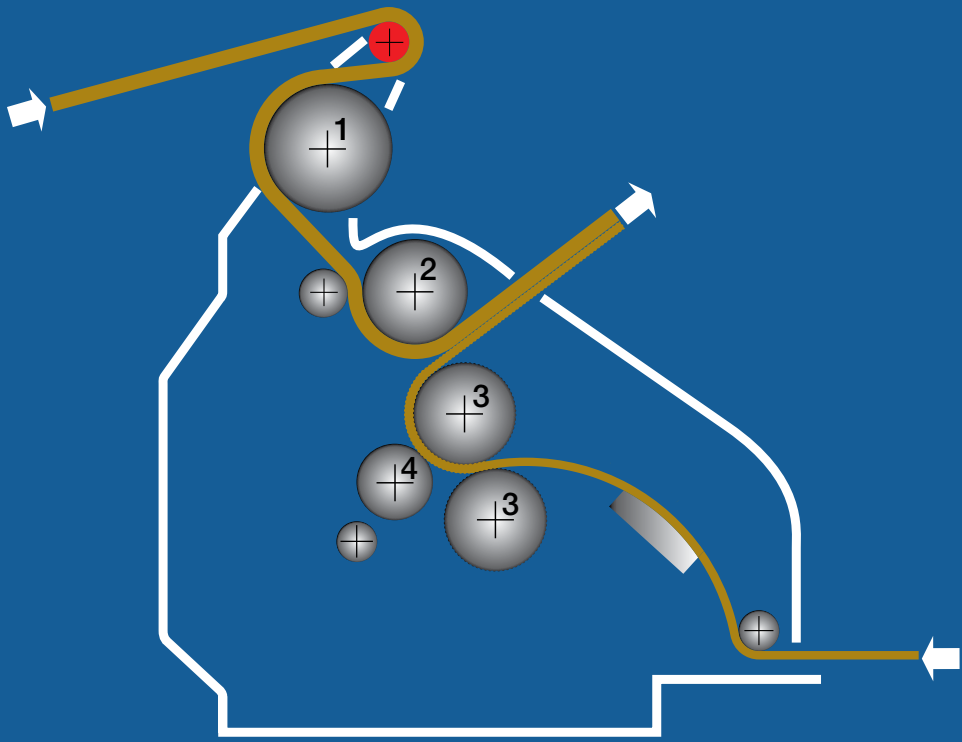



**CUSCINETTI
A RULLI CILINDRICI
PER ONDULATORI**


**ROLLER BEARINGS
FOR CORRUGATORS**

**ZYLINDERROLLENLAGER FÜR
WELLPAPPENMASCHINEN**


**ROULEMENTS
A ROULEUX CYLINDRIQUES
POUR ONDULEUSES**



-  1 Preriscaldatore
- 2 Cilindri di pressione
- 3 Cilindri Ondulatori
- 4 Incollatore e Rasatore

-  1 Pre-conditioner
- 2 Pressure roll
- 3 Corrugating roll
- 4 Gluesystem

-  1 Vorkonditionierer
- 2 Anpreßwalze
- 3 Riffelwazen
- 4 Leimwerk

-  1 Prechauffeur
- 2 Rouleaux de Pression
- 3 Roleaux Onduleurs
- 4 Systeme de Collage et Rasage

CARATTERISTICHE TECNICHE

MATERIALI

- Anelli in acciaio per cuscinetti secondo UNI 100Cr6 durezza 58 HRC (+2); stabilizzazione a 250° C
- Rulli in acciaio per cuscinetti secondo UNI 100 Cr6 durezza 58/65 HRC.
- Gabbia in bronzo o in acciaio

CLASSE DI PRECISIONE

- Secondo ISO P 6 per le dimensioni di ingombro
- Secondo ISO P 5 per la concentricità dell' anello interno

CONTROLLI E CERTIFICAZIONE

- Anelli interni controllo 100% concentricità e rotondità
- Giochi radiali controllo 100%
- Certificazione di controllo allegata al cuscinetto
- Eventuale certificazione materiale e TT su richiesta.

GEOMETRIA DEL CUSCINETTO

Ottimizzazione in funzione di:

- Capacità di carico
- Volumi liberi per lubrificante
- Struttura della gabbia
- Verifica giochi radiali in avviamento e a regime

ENGINEERING DATA

RAW MATERIAL

- Rings made in high quality UNI 100Cr6 chrome steel hardness to be 58 HRC (+2) , heat treated and stabilized to 250° C (480° F)
- Rollers made in high quality UNI 100Cr6 chrome steel , hardness 58/65 HRC
- Machined brass or steel cage

PRECISION

- According to ISO P 6 for boundary dimensions
- According to ISO P 5 for inner ring roundness

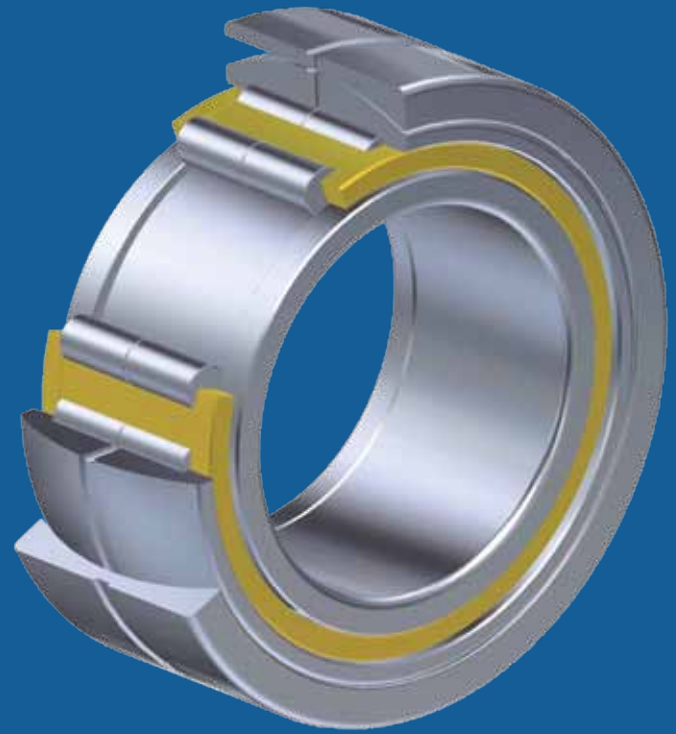
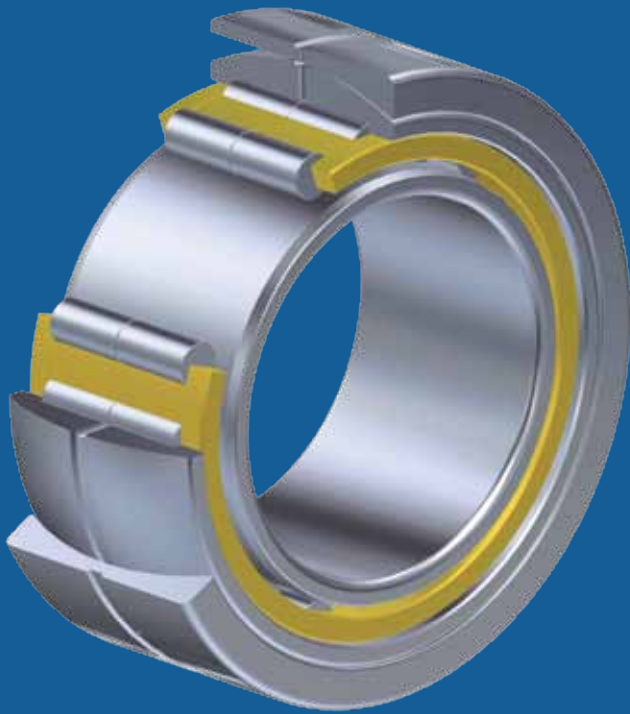
CERTIFICATION AND CONTROLS

- Inner rings 100% checked for roundness and concentricity (certification enclosed with the product)
- Radial internal clearance 100% checked
- Raw material and heat treatment certifications upon request

BEARING GEOMETRY

Design optimization based upon :

- Load carrying capacity
- Free volume needed for lubrication
- Cage design
- Radial clearance values for start-up and working conditions



TECHNISCHE MERKMALE

MATERIAL

- Ringe aus wälzlagerstahl, UNI 100Cr6 härte 58 HRC (+2), Stabilisierung auf 250° C
- Rollen aus wälzlagerstahl, UNI 100 härte 58 / 65 HRC
- Käfig aus Bronze oder Stahl

GENAUIGKEIT

- ISO P 6 fuer Ausmassen
- ISO P 5 fuer Konzentrizitaet des Innenringes

PRÜFUNG UND ZERTIFIZIERUNG

- Innenringe: 100% - ige Prüfung auf Konzentrizität und Rundheit
- Radialluft: 100% - ige Prüfung
- Prüfprotokoll dem Rollenlager beigefügt
- Warmbehandlung und Materialzertifizierung auf Anfrage

GEOMETRIE DES ROLLENLAGERS

Die Geometrie des Rollenlagers wird hinsichtlich:

- Belastungsfähigkeit,
- Freivolumen fuer Schmiermittel,
- Prüfung der Radialluft beim Anlauf und im Betrieb optimiert.



CARACTÉRISTIQUES TECHNIQUES

MATERIELS

- Bagues en acier pour roulements selon UNI 100 Cr 6. dureté 58 HRC (+2); stabilisation à 250° C.
- Rouleaux en acier pour roulements selon UNI 100 Cr 6. dureté 58/65 HRC.
- Cage en bronze massive ou acier.

CLASSE DE PRECISION

- Selon ISO P6 pour les dimensions
- Selon ISO P5 pour la bague intérieure.

CONTROLE ET CERTIFICATION

- Bagues intérieures contrôlées 100% sur la concentricité et la rotondité
- Jeux radiaux contrôlés 100%
- Certificat de controle inclus avec chaque serie de roulement
- Eventuelle certificat de matière et de traitement thermique.

GEOMETRIE DU ROULEMENT

Optimisation en fonction de:

- Capacité de charge
- Volume libre pour la graisse
- Structure de la cage
- Vérification des jeux radiaux à froid et à charge.

INDEX									
Corrugator Model	Faro Part Number	Peso	d		D		B		Page
			mm	in	mm	in	mm	in	
AGNATI G012	2.0046 2.0046 GZZ *	~11 Kg ~ 11 Kg	127	5	184.15	7.25	127.1	5.004	10
BLONDEL 3401	2.0206	~ 16 Kg	141.02	5.552	203	7.992	144	5.669	11
BLONDEL 3401	2.0206/A	~ 16 Kg	141.02	5.552	203	7.992	164	6.457	11
KOPPERS 200	2.0199 2.0199 GZZ *	~ 18 Kg ~ 18 Kg	126.91	4.996	196.85	7.75	152.4	6	12
KOPPERS 200	2.0200 2.0200 GZZ	~ 20,5 Kg ~ 20,5 Kg	126.91	4.996	203.2	8	152.4	6	13
KOPPERS 200	2.0256	~ 6 Kg	101.6	4	152.4	6	101.6	4	14
LANGSTON XD/280	2.2000 2.2000 GZZ *	~ 9,5 Kg ~ 9,5 Kg	127	5	184.15	7.25	114.3	4.5	15
LANGSTON XD/280	2.2001 2.2001 GZZ *	~ 9 Kg ~ 9 Kg	127	5	184.15	7.25	101.675	4.003	16
LANGSTON XD/380SF/280	2.0501	~ 9,5 Kg	126.987	4.999	215.9	8.5	61.9	2.437	17
LANGSTON XD/380SF/280	2.0502	~ 9,5 Kg	126.987	4.999	215.9	8.5	61.9	2.437	17
LANGSTON XA	2.0256	~ 6 Kg	101.6	4	152.4	6	101.6	4	14
LANGSTON 101/102	2.1247	~ 5,5 Kg	95	3.74	170	6.693	55.56	2.1875	18
LANGSTON 101/102	2.1248	~ 6 Kg	95	3.74	170	6.693	69.85	2.75	18
LANGSTON 450	2.3146	~ 24.7 Kg	126.987	4.9995	241.3	9.5	107.95	4.25	19
LANGSTON 450	2.3147	~ 25.2 Kg	126.987	4.9995	241.3	9.5	107.95	4.25	19
LANGSTON 450	2.3146A	~ 23.5 Kg	126.987	4.9995	241.3	9.5	101.6	4	20
LANGSTON 450	2.3147A	~ 23.9 Kg	126.987	4.9995	241.3	9.5	101.6	4	20
MARTIN 188	2.0012	~ 16 Kg	120	4.724	215	8.465	130	5.118	21
MARTIN 260	2.0009/A	~ 16 Kg	135	5.315	210	8.268	140	5.512	21
MASSENZANA OC200	2.1259	~ 12 Kg	118	4.646	200	7.874	110	4.331	22
MASSENZANA OC28/OC80	2.0433 2.0433 GZZ *	~ 11,5 Kg ~ 11,5 Kg	110	4.331	170	6.693	150	5.905	23
MASSENZANA OC300 GEM	2.1899 *	~ 20 Kg	150	5.906	250	9.843	100	3.937	24
MEDESA 250	2.0199 2.0199 GZZ *	~ 18 Kg ~ 18 Kg	126.91	4.996	196.85	7.75	152.4	6	12
MEDESA 250	2.0200 2.0200 GZZ *	~ 20,5 Kg ~ 20,5 Kg	126.91	4.996	203.2	8	152.4	6	13
MEDESA 350	2.2024 *	~ 26,5 Kg	170	6.693	280	11.024	109	4.291	25
(50 C/D/E/F/G) MHI	2.2004 *	~ 21,5 Kg	150	5.906	250	9.843	100	3.937	26
(60 PASER G/H)									
(50 C/D/E/F/G) MHI	2.2005 *	~ 21 Kg	150	5.906	250	9.843	100	3.937	26
(60 PASER G/H)									

Note: (* GREASE LUBRICATED)

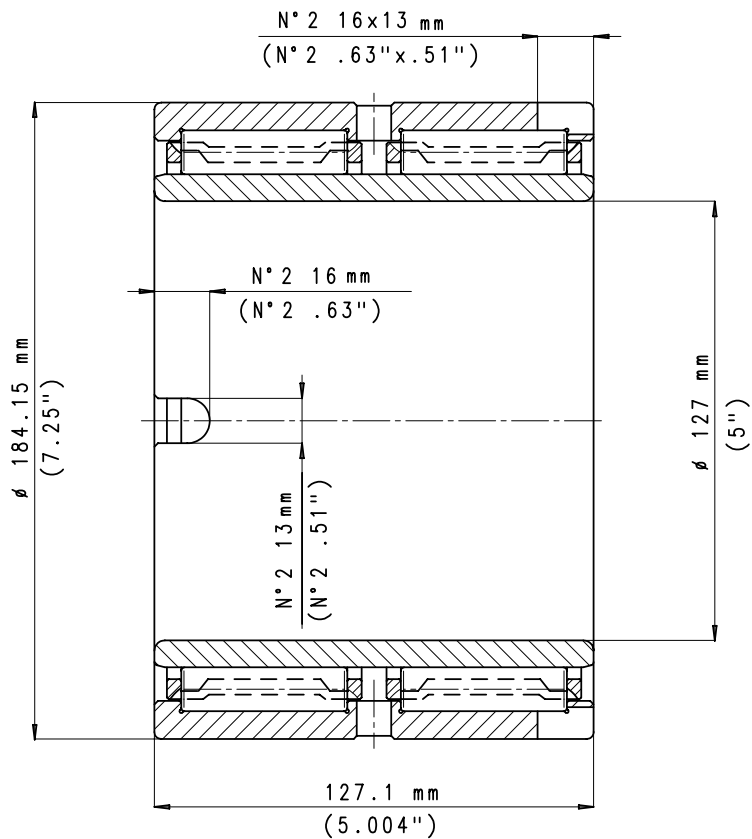
INDEX									
Corrugator Model	Faro Part Number	Peso	d		D		B		Page
			mm	in	mm	in	mm	in	
MHI 60 PASER G	2.2014 *	~ 49 Kg	180	7.087	330	12.992	127	5	27
MHI 60 PASER G	2.2015 *	~ 49,5 Kg	180	7.087	330	12.992	120	4.724	27
PETERS COMPACT STAR	2.2000 2.2000 GZZ *	~ 9,5 Kg ~ 9,5 Kg	127	5	184.15	7.25	114.3	4.5	15
PETERS COMPACT STAR	2.2001 2.2001 GZZ *	~ 9 Kg ~ 9 Kg	127	5	184.15	7.25	101.675	4.003	16
PETERS COMPACT STAR	2.0501	~ 9,5 Kg	126.987	4.999	215.9	8.5	61.9	2.437	17
PETERS COMPACT STAR	2.0502	~ 9,5 Kg	126.987	4.999	215.9	8.5	61.9	2.437	17
(MULTI STAR) PETERS (SINGLE STAR)	2.2022	~ 22 Kg	170	6.693	260	10.236	115	4.528	25
PETERS EHU	2.0045/1 2.0045/1 GZZ *	~ 19 Kg ~ 19 Kg	127	5	190.5	7.5	190.7	7.508	28
PETERS	2.1708	~ 6,5 Kg	115	4.528	165	6.496	115	4.528	22
PETERS	2.2003	~ 12,3 Kg	127	5	184.2	7.252	164	6.457	24
PETERS	2.2970	~ 19.6 Kg	159.94	6.2969	260	10.236	110	4.3307	33
SIMON 245	2.0199 2.0199 GZZ *	~ 18 Kg ~ 18 Kg	126.91	4.996	196.85	7.75	152.4	6	12
SIMON 245	2.0200 2.0200 GZZ *	~ 18 Kg ~ 18 Kg	126.91	4.996	203.2	8	152.4	6	13
SIMON 245	2.0986	~ 2 Kg	49.213	1.937	84.163	3.313	76.2	3	29
SIMON 245	2.0995	~ 2,5 Kg	61.913	2.437	100.038	3.938	76.2	3	30
SIMON 245	2.0996	~ 4,5 Kg	88.887	3.499	133.3	5.248	88.9	3.5	30
SIMON 245	2.0256	~ 6 Kg	101.6	4	152.4	6	101.6	4	14
SIMON 300 PSF	2.2002 2.2002 GZZ *	~ 24 Kg ~ 24 Kg	150	5.906	240	9.449	170	6.693	31
(2 HKD 268 A) S & S (2 HKE 268 A)	2.0046 2.0046 GZZ *	~ 11 Kg ~ 11 Kg	127	5	184.15	7.25	127.1	5.004	10
(2 HKD 268 A) S & S (2 HKE 268 A)	2.0328	~ 11,6 Kg	127	5	184.15	7.25	127.1	5.004	14
(2 HKD 268 A) S & S (2 HKE 268 A)	2.0099	~ 7 Kg	101.6	4	152.4	6	127	5	29
S & S 2 HKA 268 A	2.0256	~ 6 Kg	101.6	4	152.4	6	101.6	4	14
TCY	2.1899 *	~ 20 Kg	150	5.906	250	9.843	100	3.937	24
MHI 60 PASER H	2.2981	~ 55 Kg	160	6.299	340	13.386	114	4.488	32
MHI 60 PASER H	2.2982	~ 56 Kg	160	6.299	340	13.386	114	4.488	32

Note: (* GREASE LUBRICATED)

CORRUGATOR MODEL
AGNATI G012
S&S 2HKD268-A
S&S 2HKE268-A

FARO PART NUMBER
2.0046

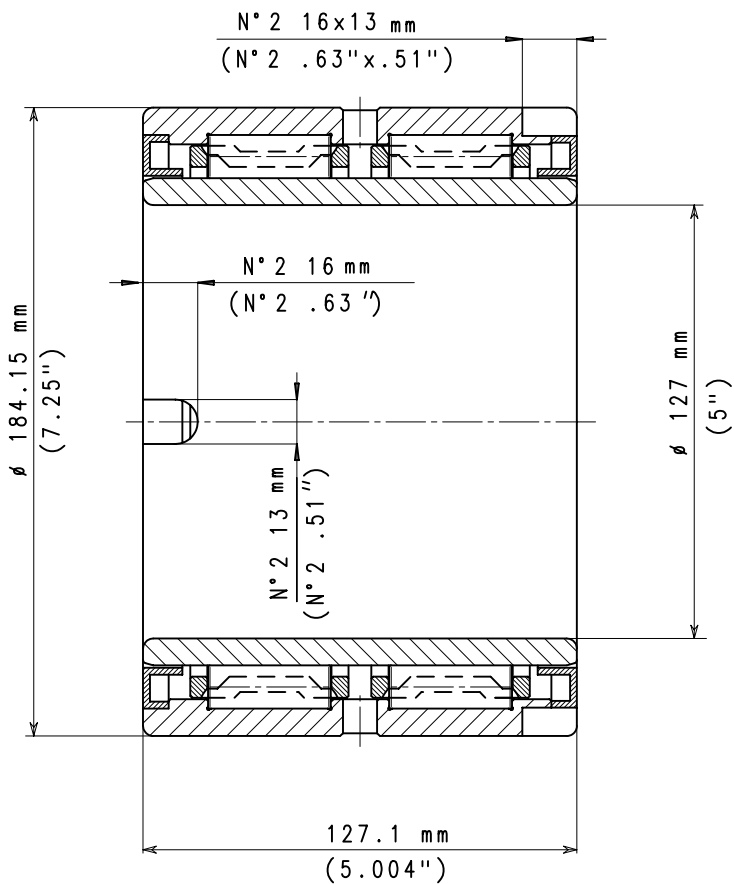
INTERNAL CLEARANCE
0.200/0.250 mm
(0.0079/0.0098")



CORRUGATOR MODEL
AGNATI G012
S&S 2HKD268-A
S&S 2HKE268-A

FARO PART NUMBER
2.0046 GZZ

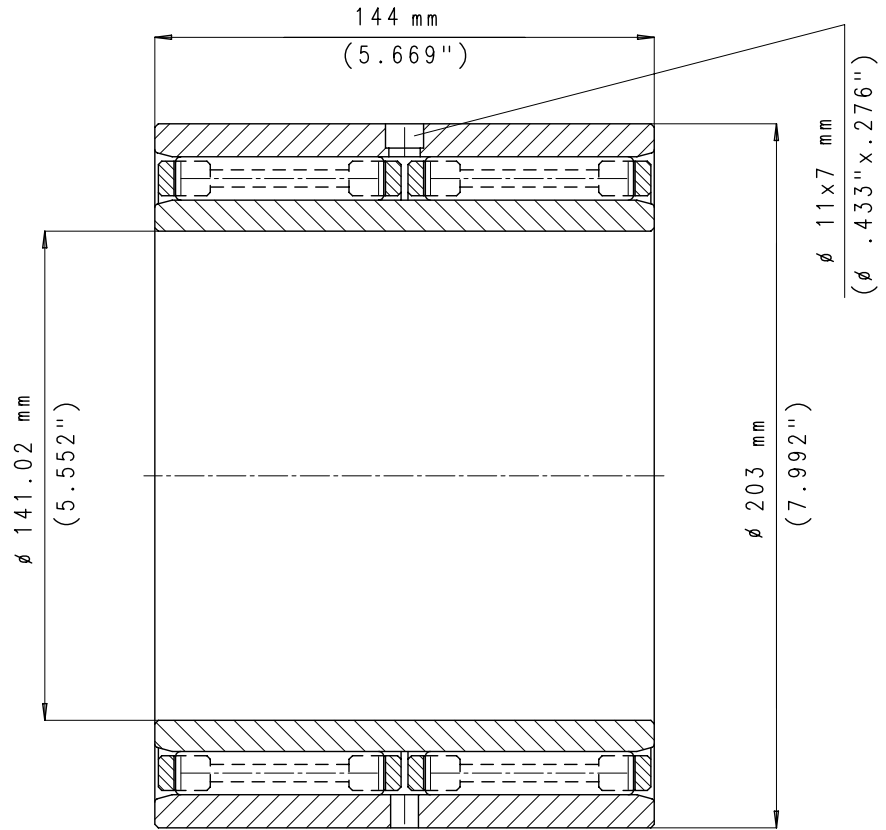
INTERNAL CLEARANCE
0.250/0.280 mm
(0.0098/0.0110")



**CORRUGATOR MODEL
BLONDEL 3401**

**FARO PART NUMBER
2.0206**

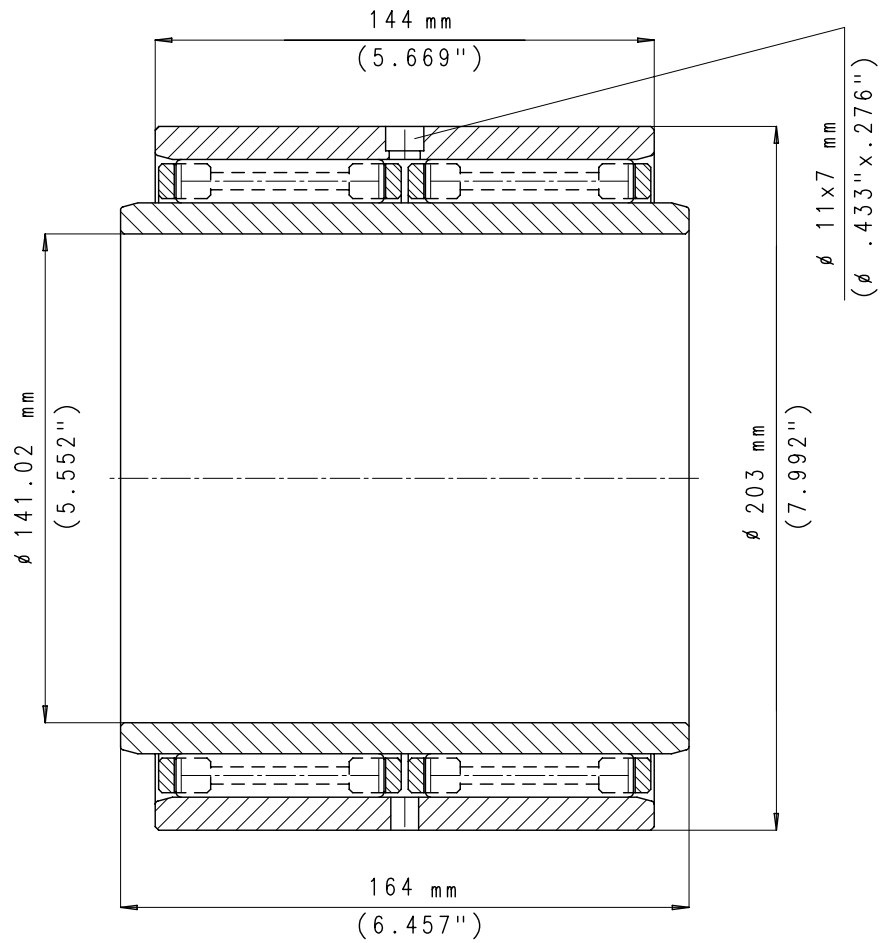
**INTERNAL CLEARANCE
0.490/0.530 mm
(0.0193/0.0209")**



**CORRUGATOR MODEL
BLONDEL 3401**

**FARO PART NUMBER
2.0206/A**

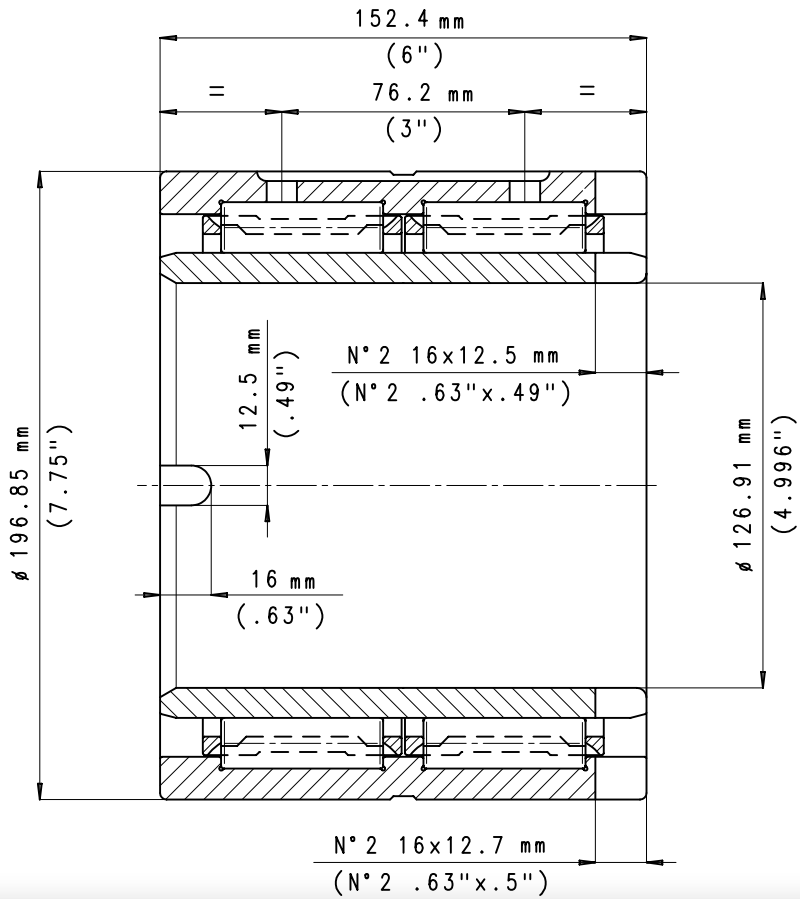
**INTERNAL CLEARANCE
0.490/0.530 mm
(0.0193/0.0209")**



CORRUGATOR MODEL
KOPPERS 200
SIMON 245
MEDESA 250

FARO PART NUMBER
2.0199

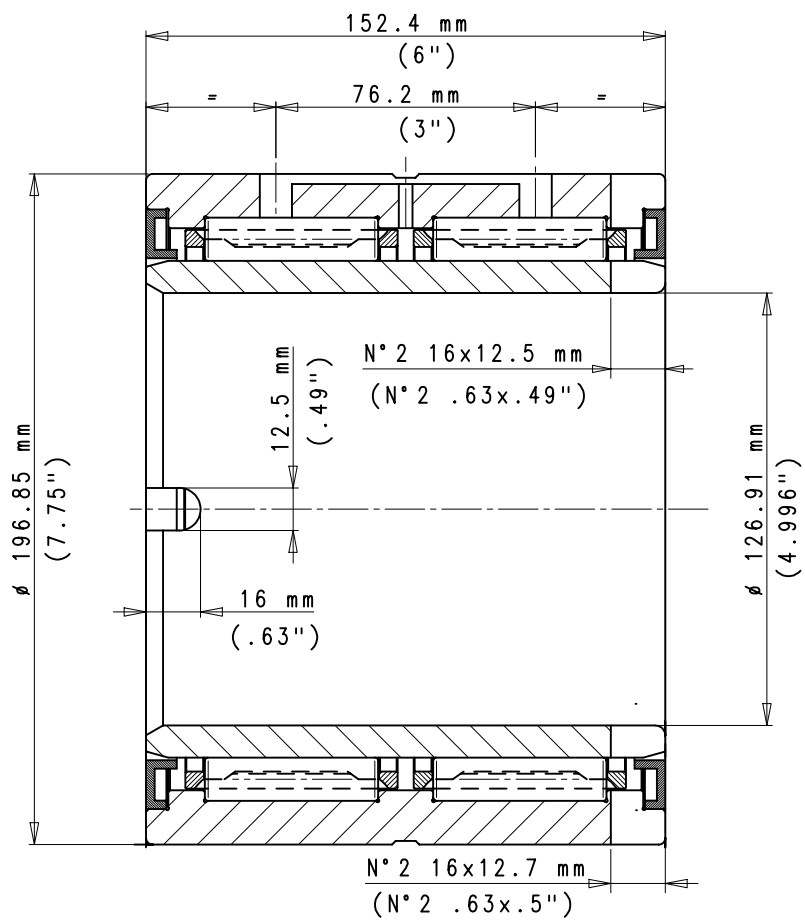
INTERNAL CLEARANCE
0.300/0.330 mm
(0.0118/0.0130")



CORRUGATOR MODEL
KOPPERS 200
SIMON 245
MEDESA 250

FARO PART NUMBER
2.0199 GZZ

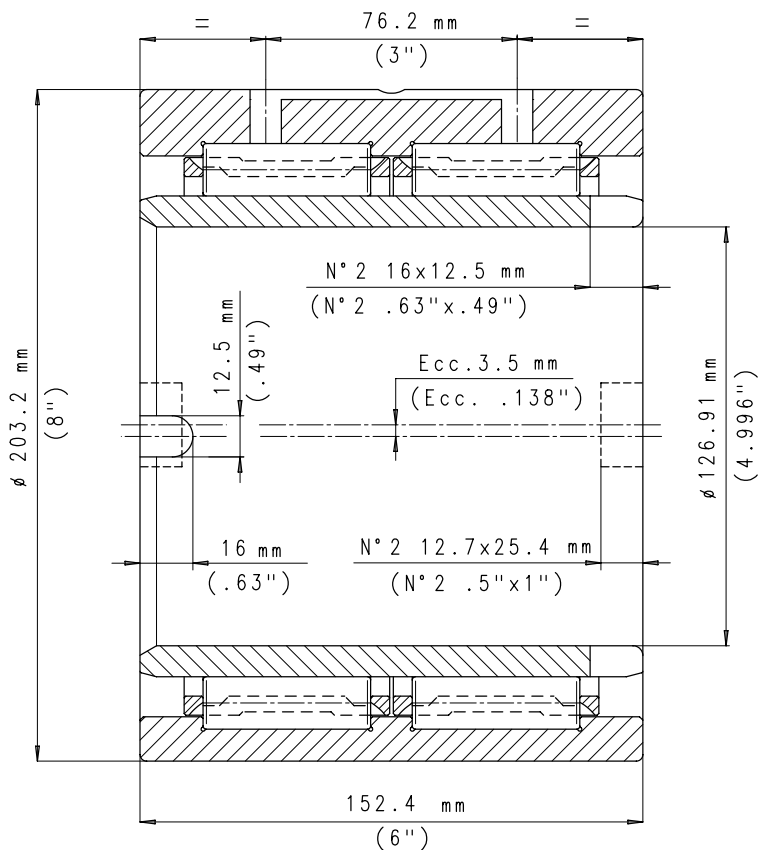
INTERNAL CLEARANCE
0.280/0.310 mm
(0.0110/0.0122")



CORRUGATOR MODEL
KOPPERS 200
SIMON 245
MEDESA 250

FARO PART NUMBER
2.0200

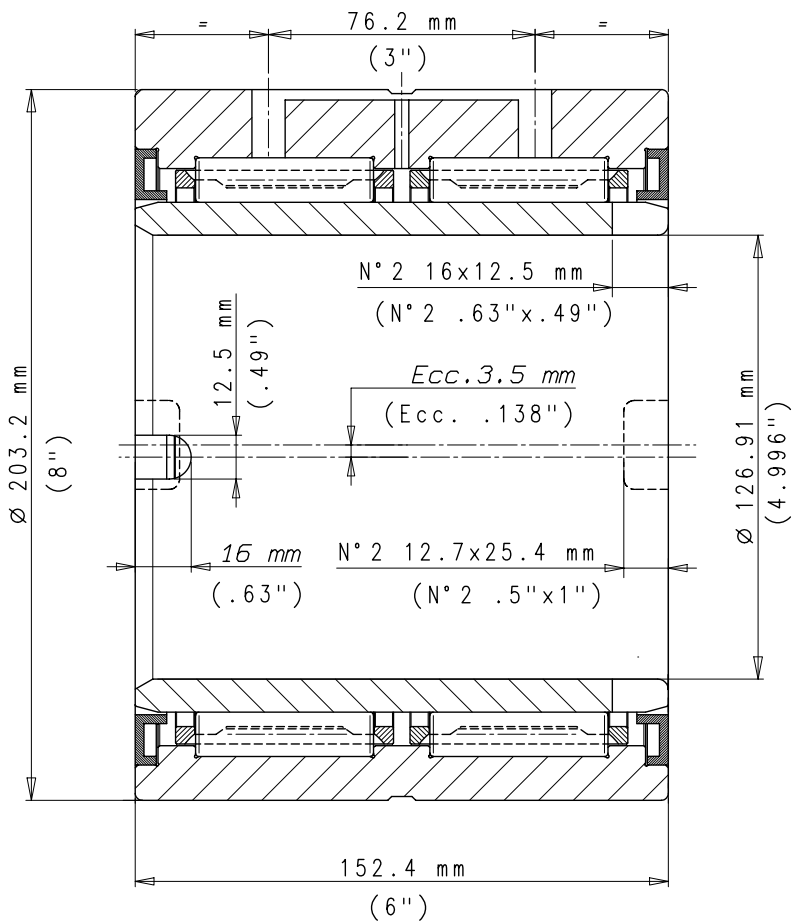
INTERNAL CLEARANCE
0.300/0.330 mm
(0.0118/0.0130")



CORRUGATOR MODEL
KOPPERS 200
SIMON 245
MEDESA 250

FARO PART NUMBER
2.0200 GZZ

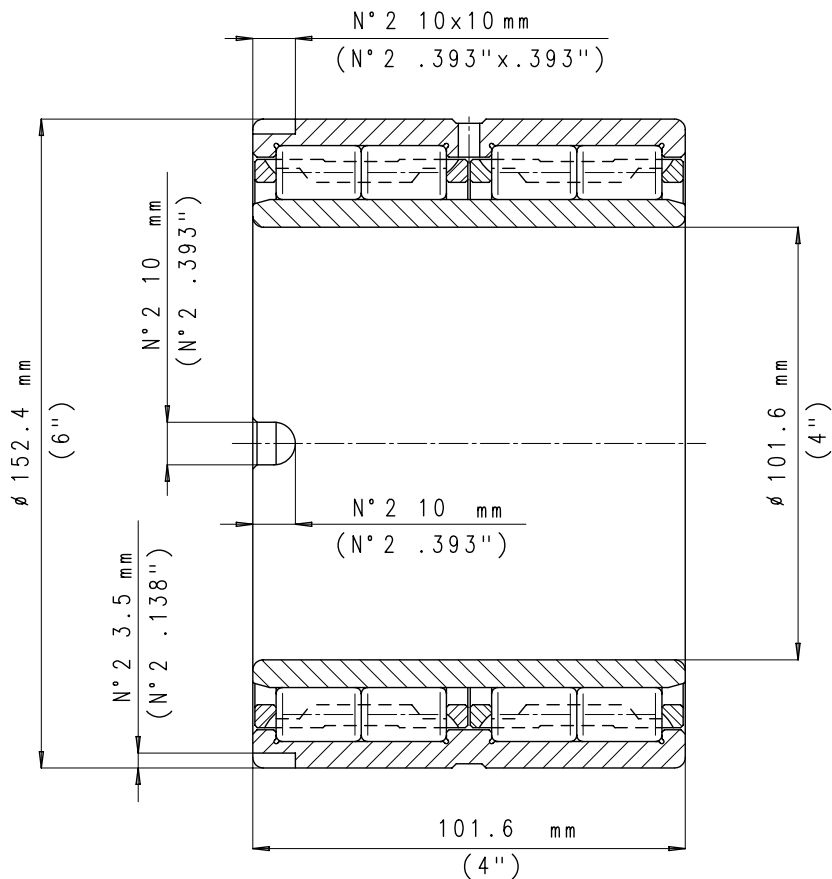
INTERNAL CLEARANCE
0.280/0.310 mm
(0.0110/0.0122")



CORRUGATOR MODEL
KOPPERS 200
LANGSTON XA
SIMON 245
S&S 2HKA268-A

FARO PART NUMBER
2.0256

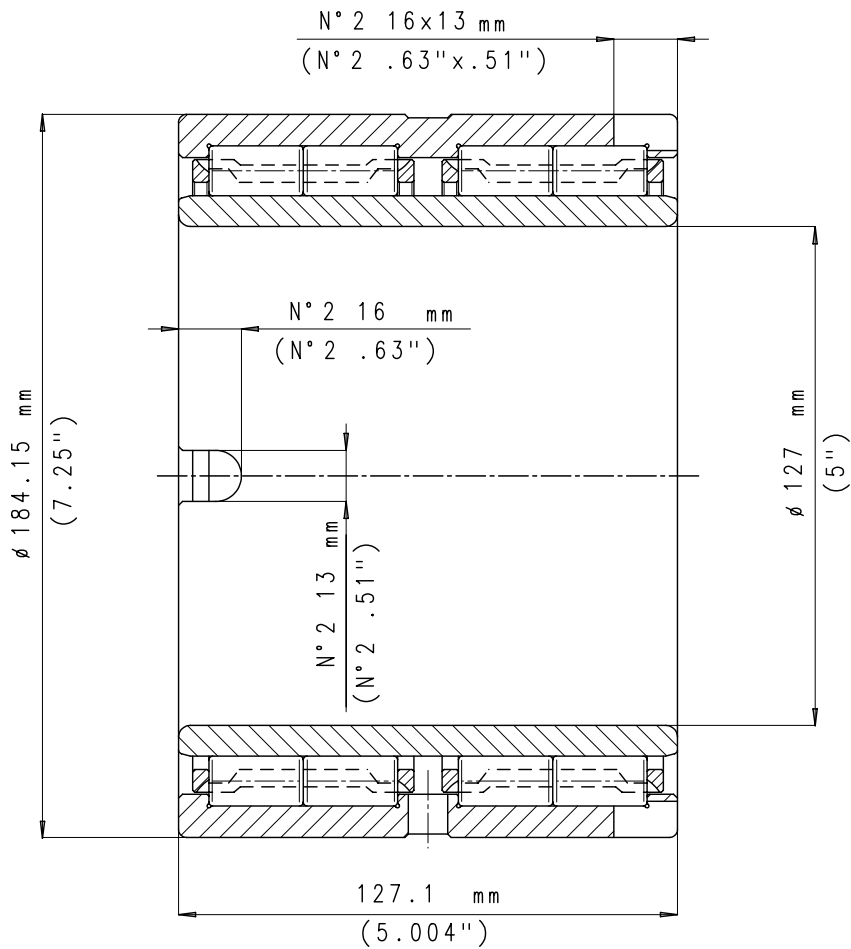
INTERNAL CLEARANCE
0.180/0.220 mm
(0.0071/0.0087")



CORRUGATOR MODEL
S&S 2HKD268-A
S&S 2HKE268-A
S&S 293000030-A

FARO PART NUMBER
2.0328

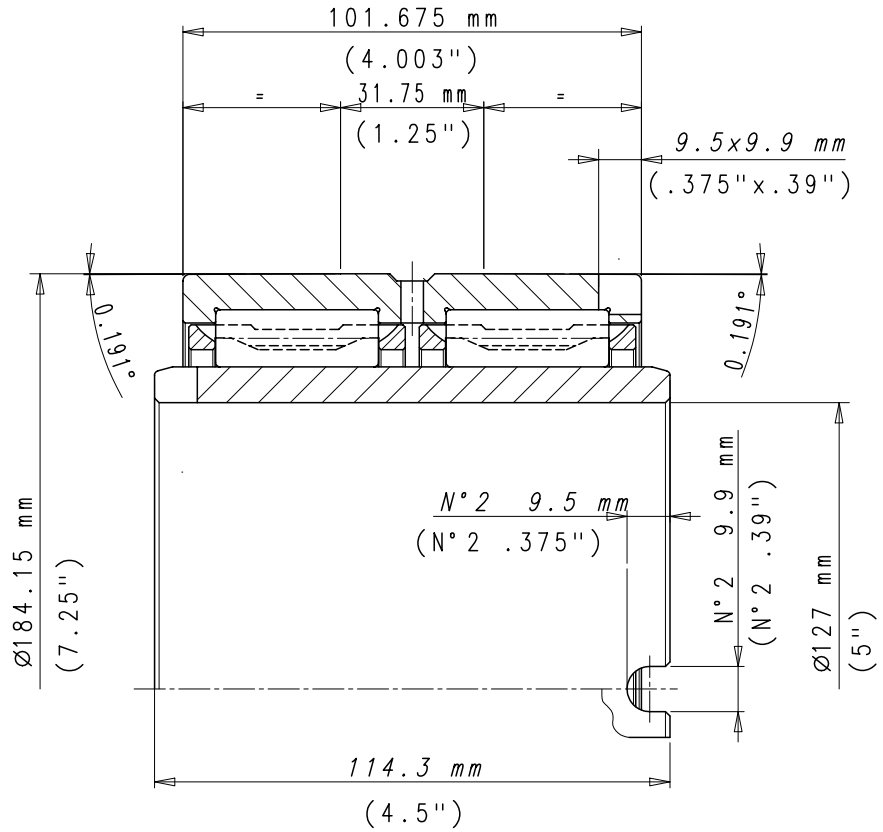
INTERNAL CLEARANCE
0.200/0.250 mm
(0.0079/0.0098")



CORRUGATOR MODEL
LANGSTON XD/280
PETERS COMPACT STAR

FARO PART NUMBER
2.2000

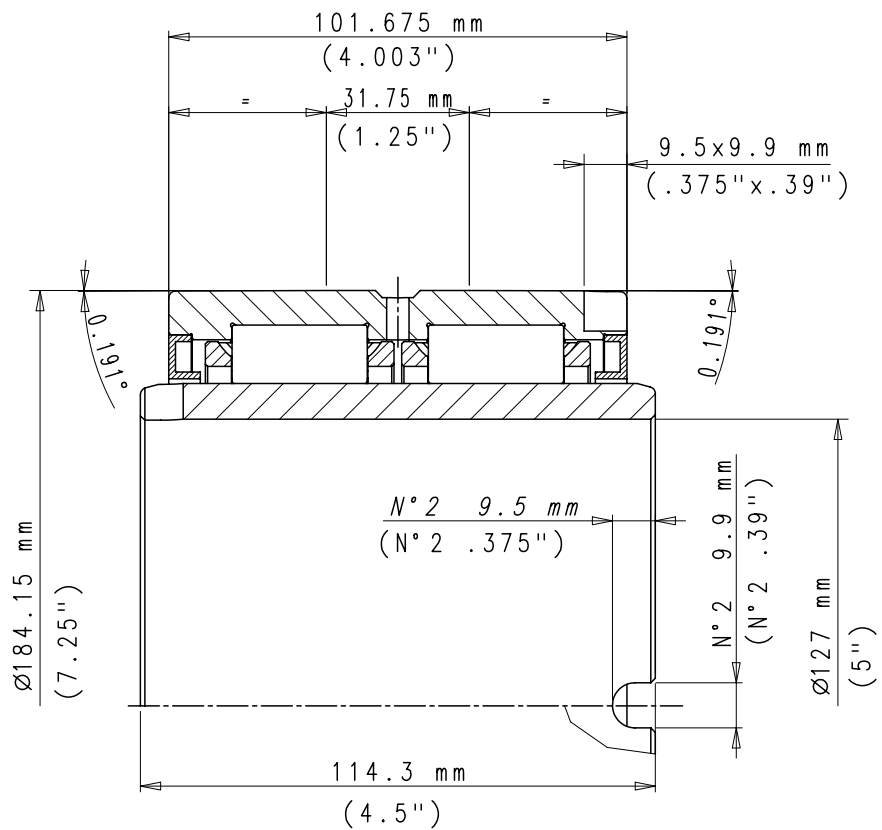
INTERNAL CLEARANCE
0.178/0.229 mm
(0.0070/0.0090")



CORRUGATOR MODEL
LANGSTON XD/280
PETERS COMPACT STAR

FARO PART NUMBER
2.2000 GZZ

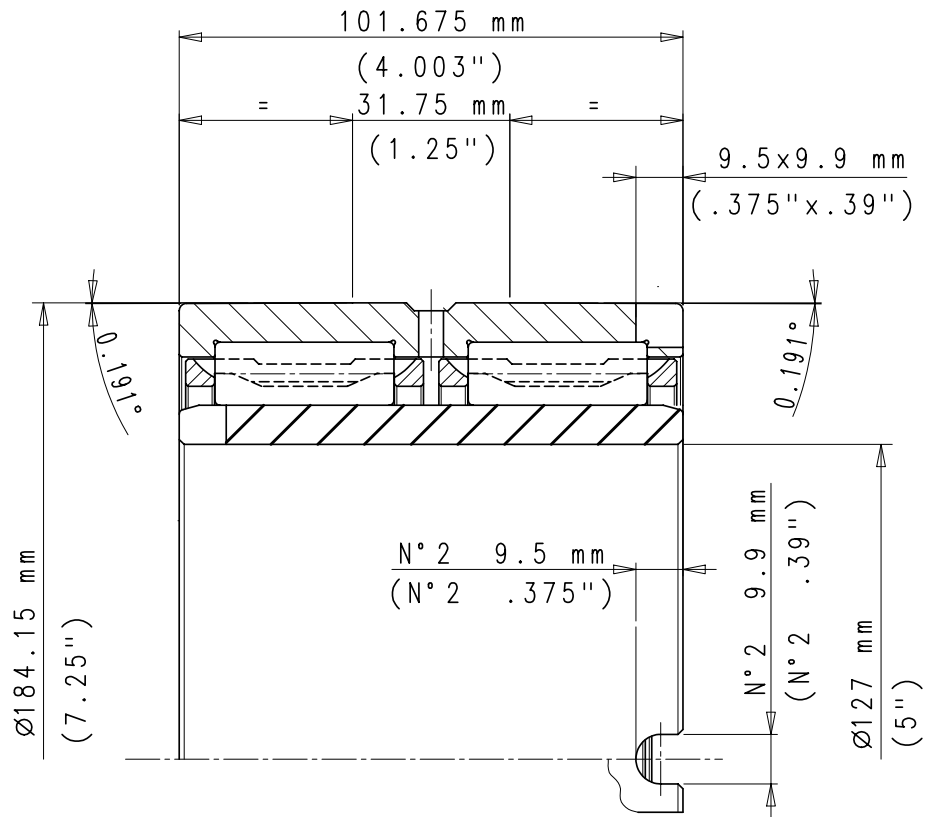
INTERNAL CLEARANCE
0.250/0.300 mm
(0.0098/0.0118")



CORRUGATOR MODEL
LANGSTON XD/280
PETERS COMPACT STAR

FARO PART NUMBER
2.2001

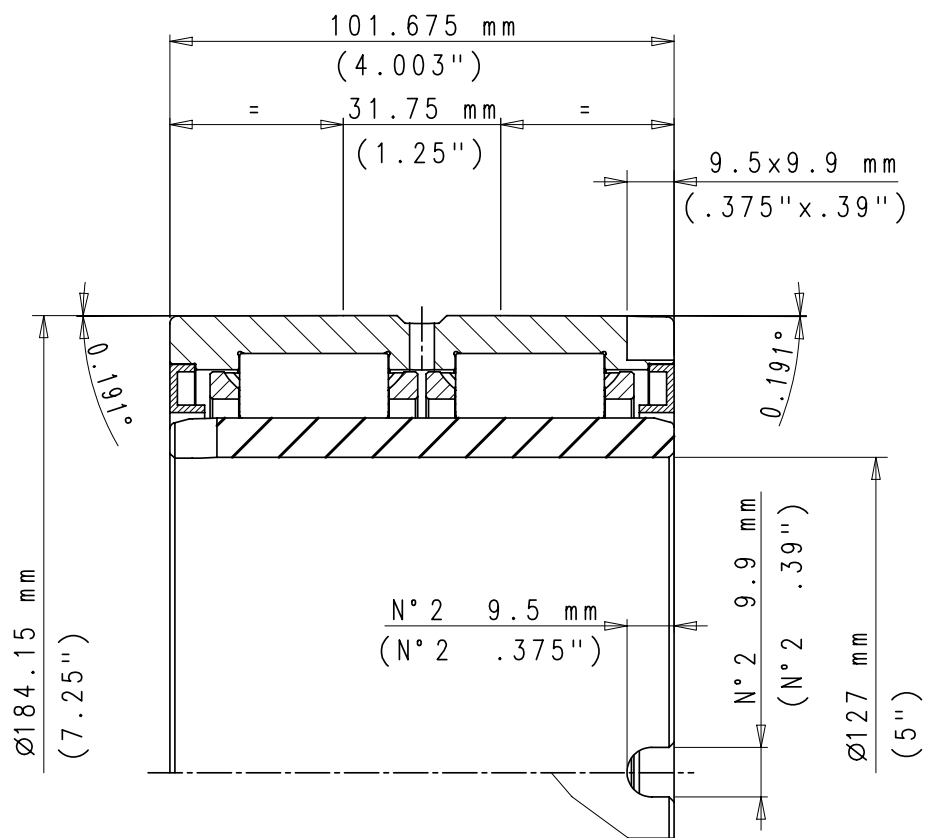
INTERNAL CLEARANCE
0.178/0.229 mm
(0.0070/0.0090")



CORRUGATOR MODEL
LANGSTON XD/280
PETERS COMPACT STAR

FARO PART NUMBER
2.2001 GZZ

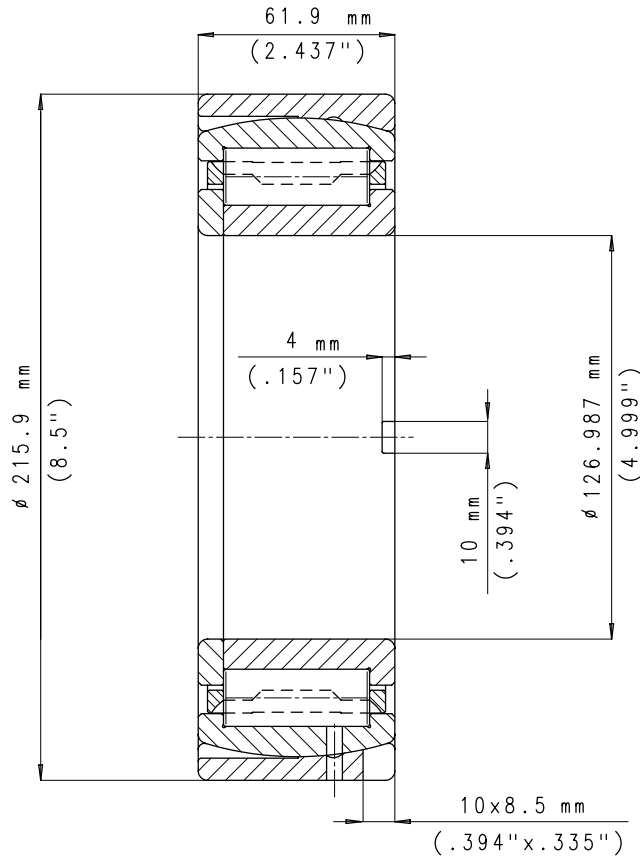
INTERNAL CLEARANCE
0.250/0.300 mm
(0.0098/0.0118")



CORRUGATOR MODEL
LANGSTON XD/380SF/280
PETERS COMPACT STAR

FARO PART NUMBER
2.0501

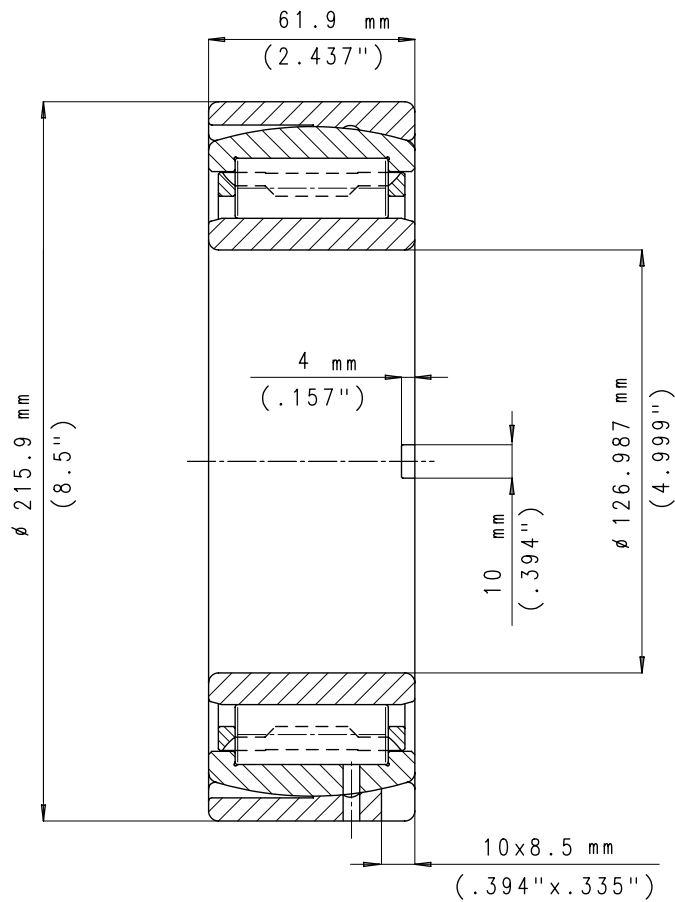
INTERNAL CLEARANCE
0.250/0.300 mm
(0.0098/0.0118")



CORRUGATOR MODEL
LANGSTON XD/380SF/280
PETERS COMPACT STAR

FARO PART NUMBER
2.0502

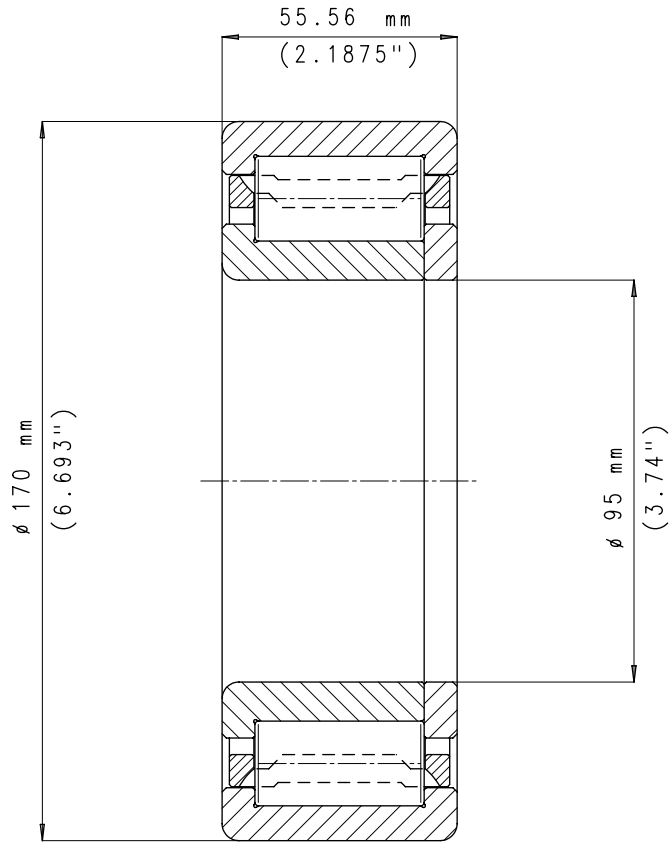
INTERNAL CLEARANCE
0.250/0.300 mm
(0.0098/0.0118")



**CORRUGATOR MODEL
LANGSTON 101/102**

**FARO PART NUMBER
2.1247**

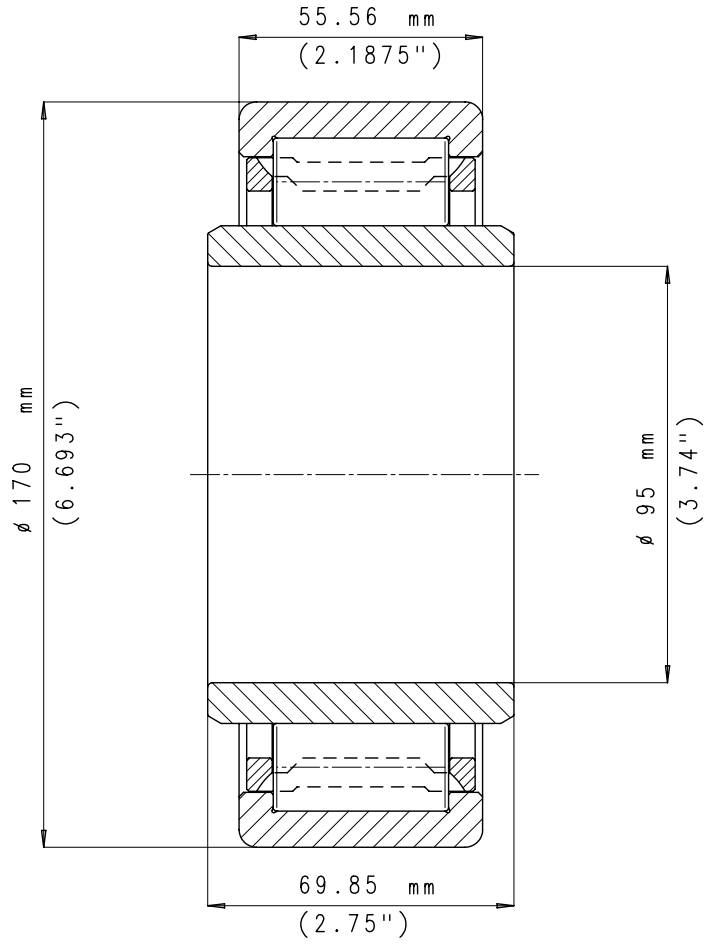
**INTERNAL CLEARANCE
0.220/0.260 mm
(0.0087/0.0102")**



**CORRUGATOR MODEL
LANGSTON 101/102**

**FARO PART NUMBER
2.1248**

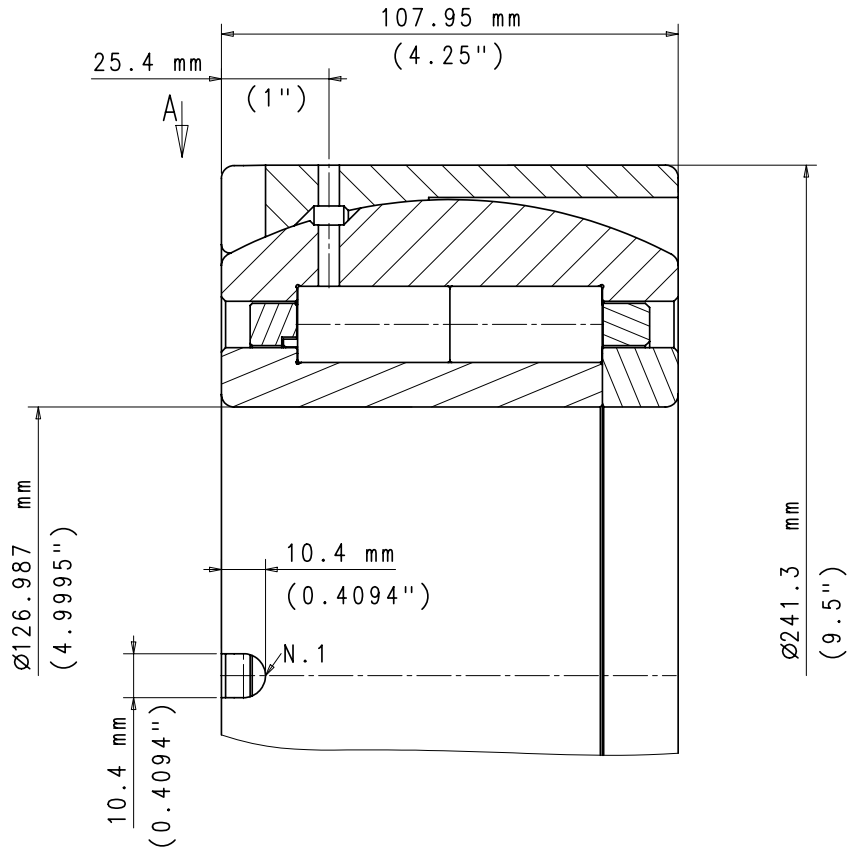
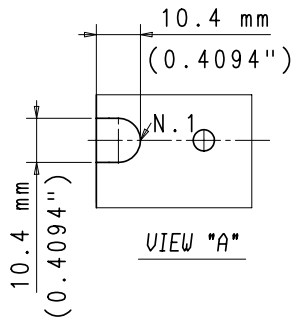
**INTERNAL CLEARANCE
0.220/0.260 mm
(0.0087/0.0102")**



**CORRUGATOR MODEL
LANGSTON 450**

**FARO PART NUMBER
2.3146**

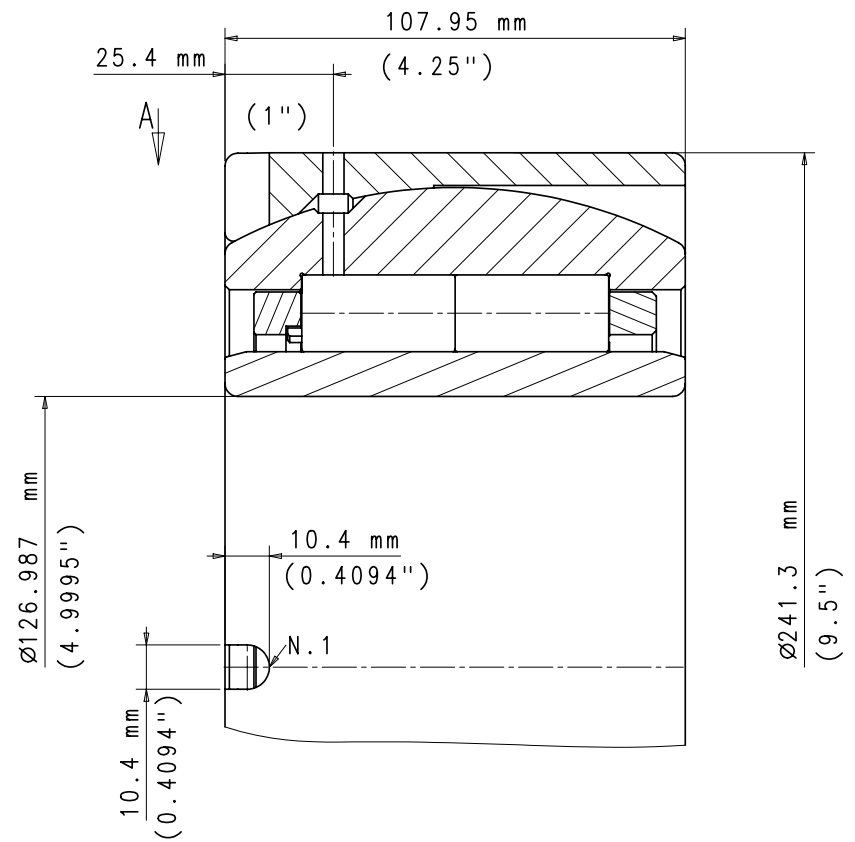
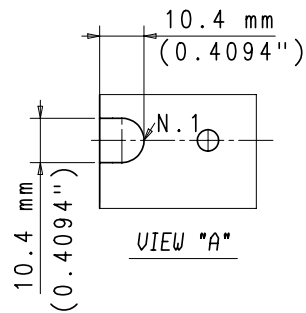
**INTERNAL CLEARANCE
0.200/0.250 mm
(0.0078/0.0098")**



**CORRUGATOR MODEL
LANGSTON 450**

**FARO PART NUMBER
2.3147**

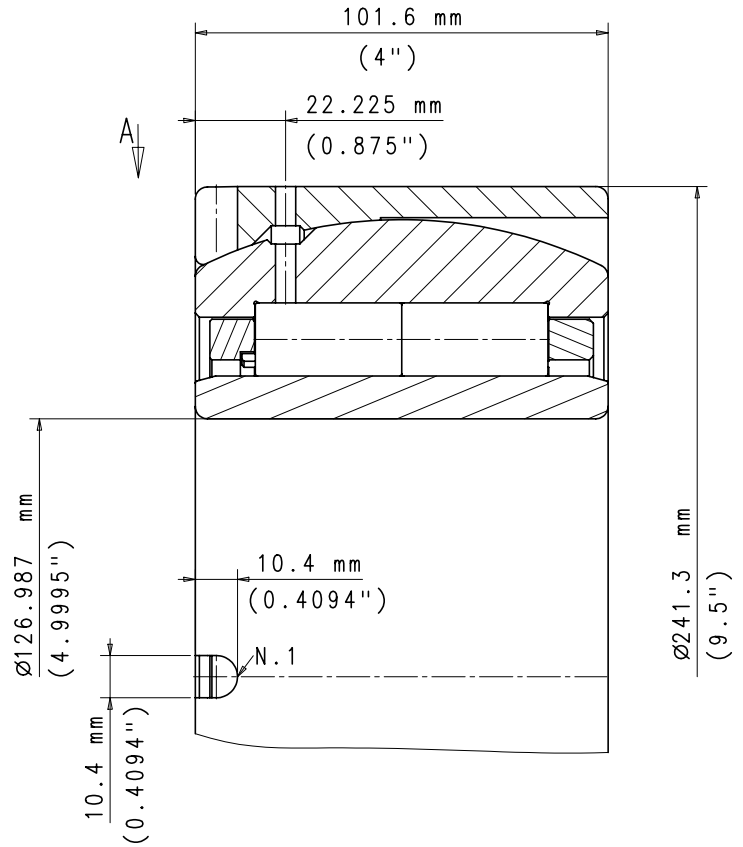
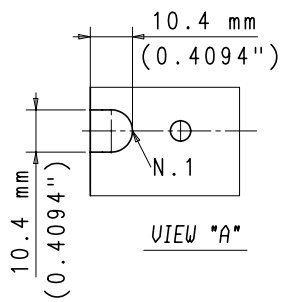
**INTERNAL CLEARANCE
0.200/0.250 mm
(0.0078/0.0098")**



**CORRUGATOR MODEL
LANGSTON 450**

**FARO PART NUMBER
2.3146A**

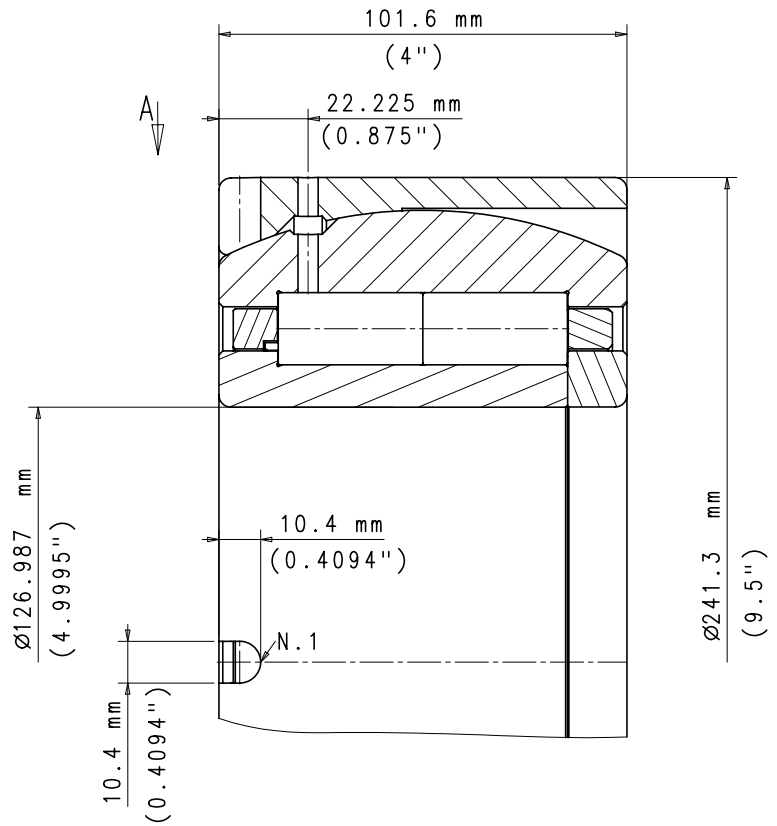
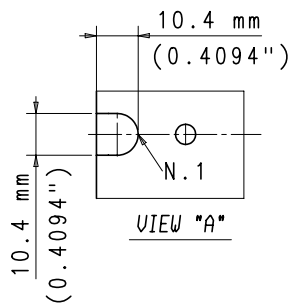
**INTERNAL CLEARANCE
0.200/0.250 mm
(0.0078/0.0098")**



**CORRUGATOR MODEL
LANGSTON 450**

**FARO PART NUMBER
2.3147A**

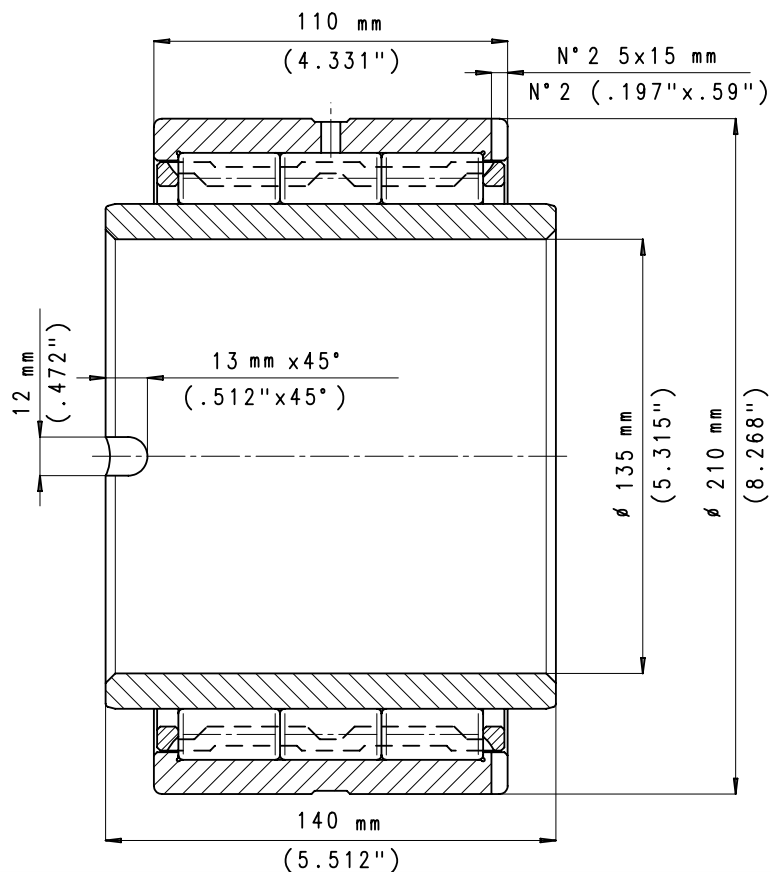
**INTERNAL CLEARANCE
0.200/0.250 mm
(0.0078/0.0098")**



**CORRUGATOR MODEL
MARTIN 260**

**FARO PART NUMBER
2.0009/A**

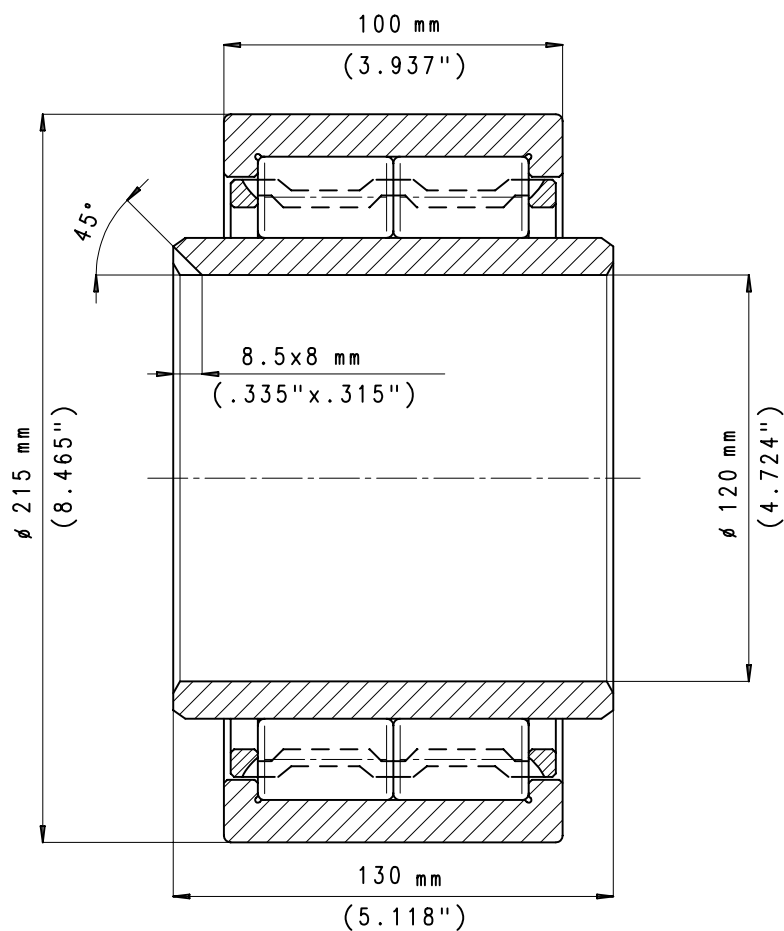
**INTERNAL CLEARANCE
0.320/0.350 mm
(0.0126/0.0138")**



**CORRUGATOR MODEL
MARTIN 188**

**FARO PART NUMBER
2.0012**

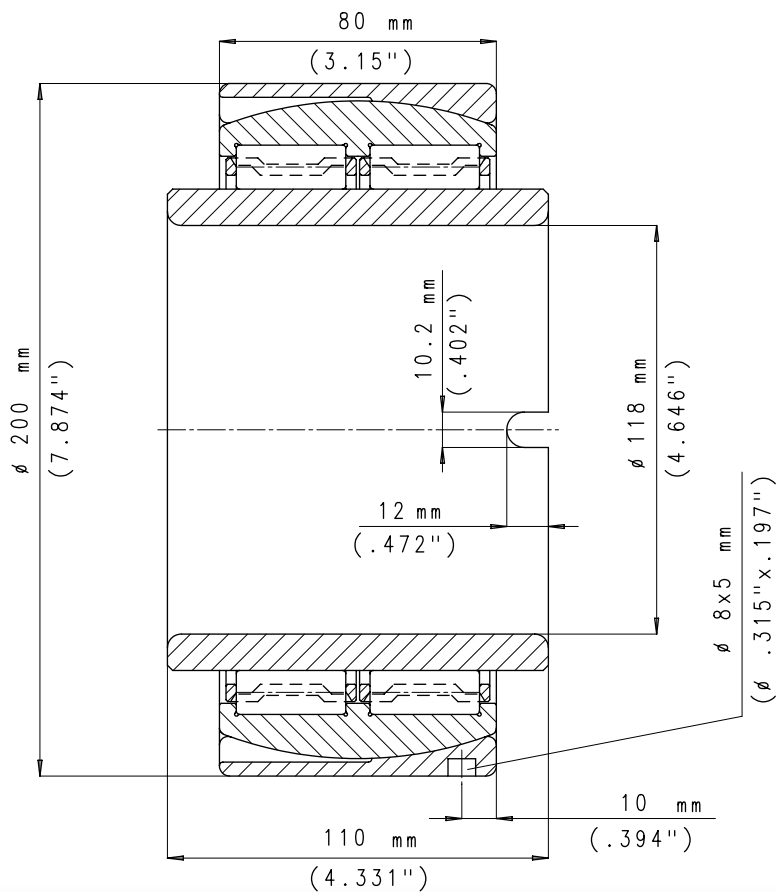
**INTERNAL CLEARANCE
0.180/0.220 mm
(0.0071/0.0087")**



**CORRUGATOR MODEL
MASSENZANA OC 200**

**FARO PART NUMBER
2.1259**

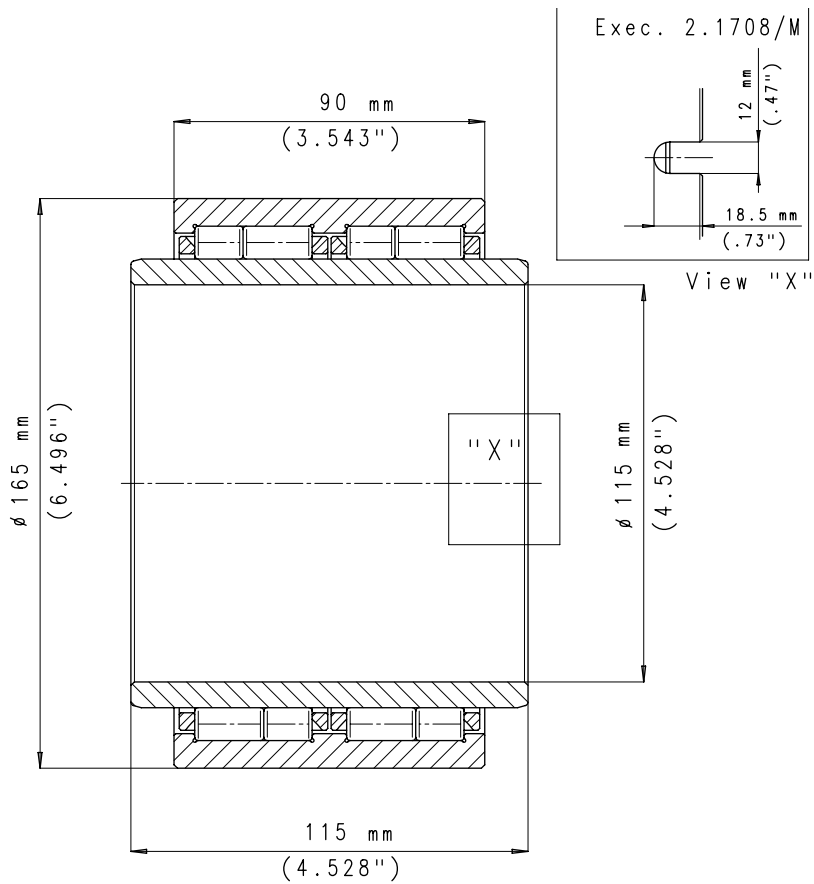
**INTERNAL CLEARANCE
0.310/0.360 mm
(0.0122/0.0142")**



**CORRUGATOR MODEL
PETERS**

**FARO PART NUMBER
2.1708**

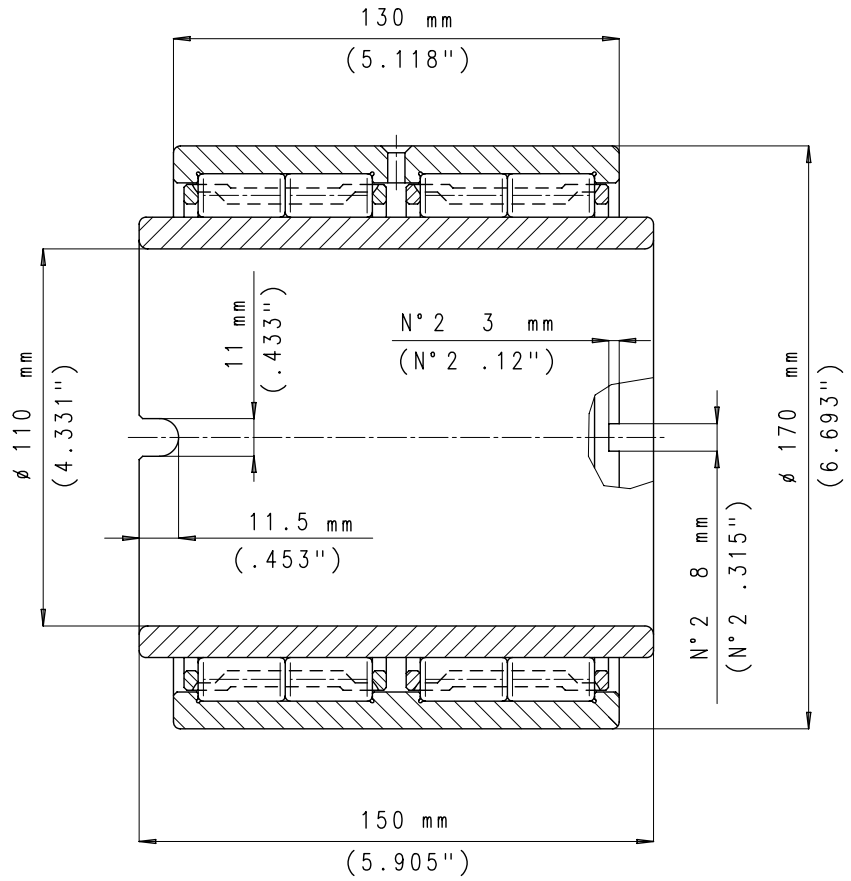
**INTERNAL CLEARANCE
0.180/0.205 mm
(0.0071/0.0081")**



CORRUGATOR MODEL
MASSEZANA OC 28
MASSEZANA OC 80

FARO PART NUMBER
2.0433

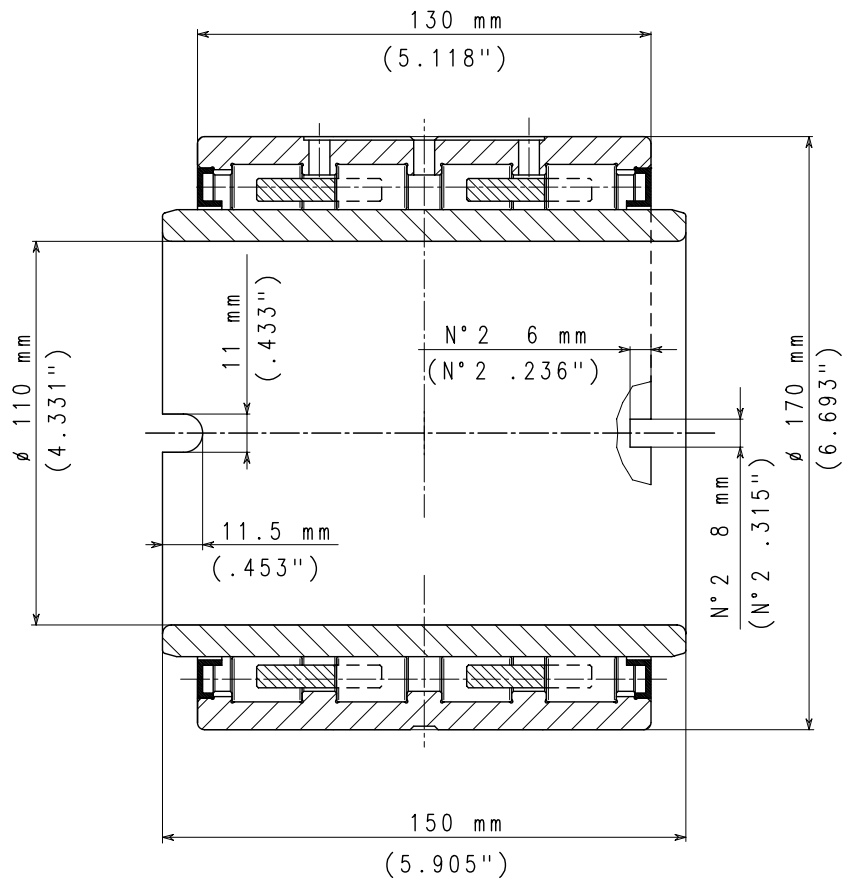
INTERNAL CLEARANCE
0.330/0.360 mm
(0.0130/0.0142")



CORRUGATOR MODEL
MASSEZANA OC 28
MASSEZANA OC 80

FARO PART NUMBER
2.0433 GZZ

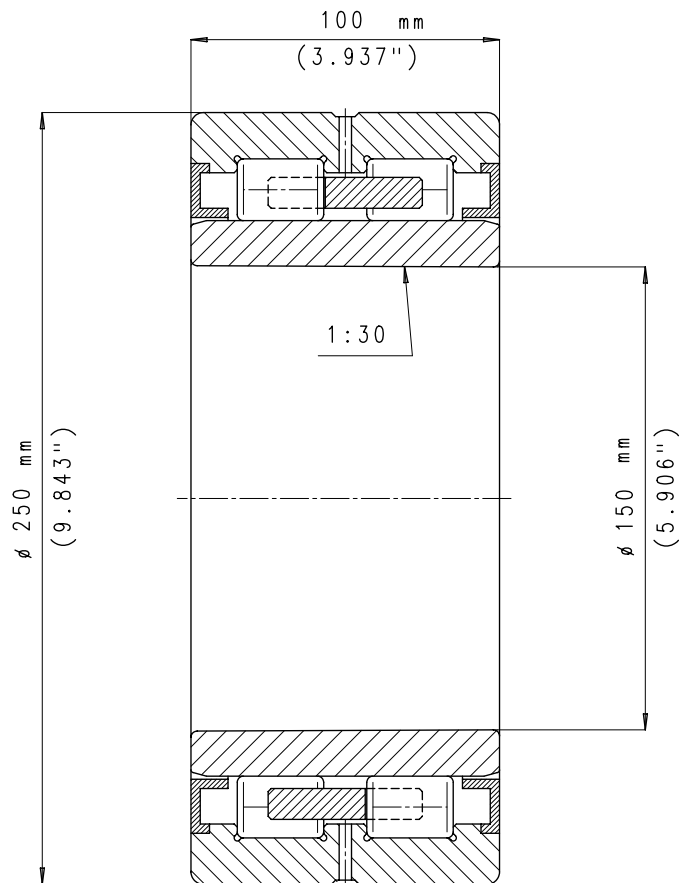
INTERNAL CLEARANCE
0.280/0.320 mm
(0.0110/0.0126")



**CORRUGATOR MODEL
MASSENZANA OC 300 GEM
TCY**

**FARO PART NUMBER
2.1899**

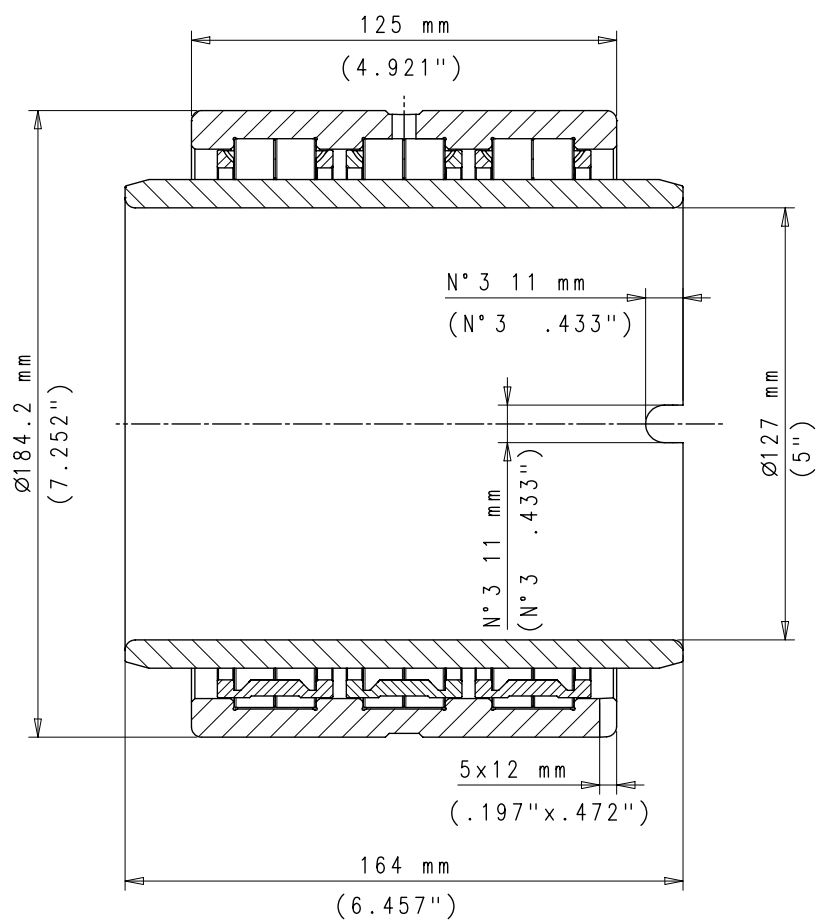
**INTERNAL CLEARANCE
0.300/0.350 mm
(0.0118/0.0138")**



**CORRUGATOR MODEL
PETERS**

**FARO PART NUMBER
2.2003**

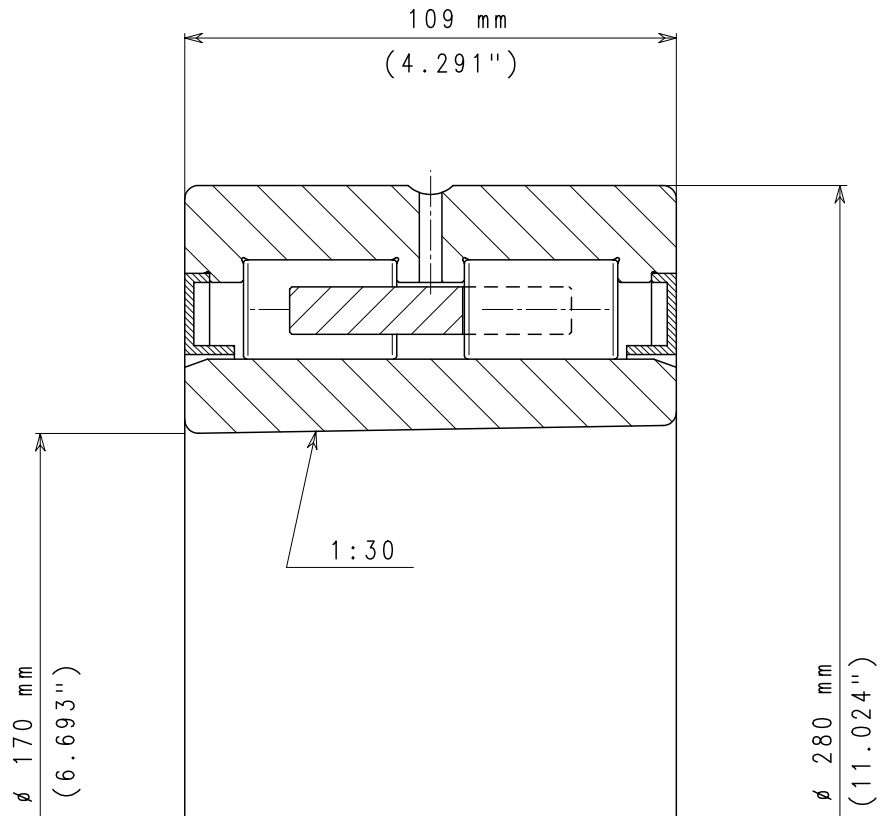
**INTERNAL CLEARANCE
0.265/0.305 mm
(0.0104/0.0120")**



**CORRUGATOR MODEL
MEDESA 350**

**FARO PART NUMBER
2.2024**

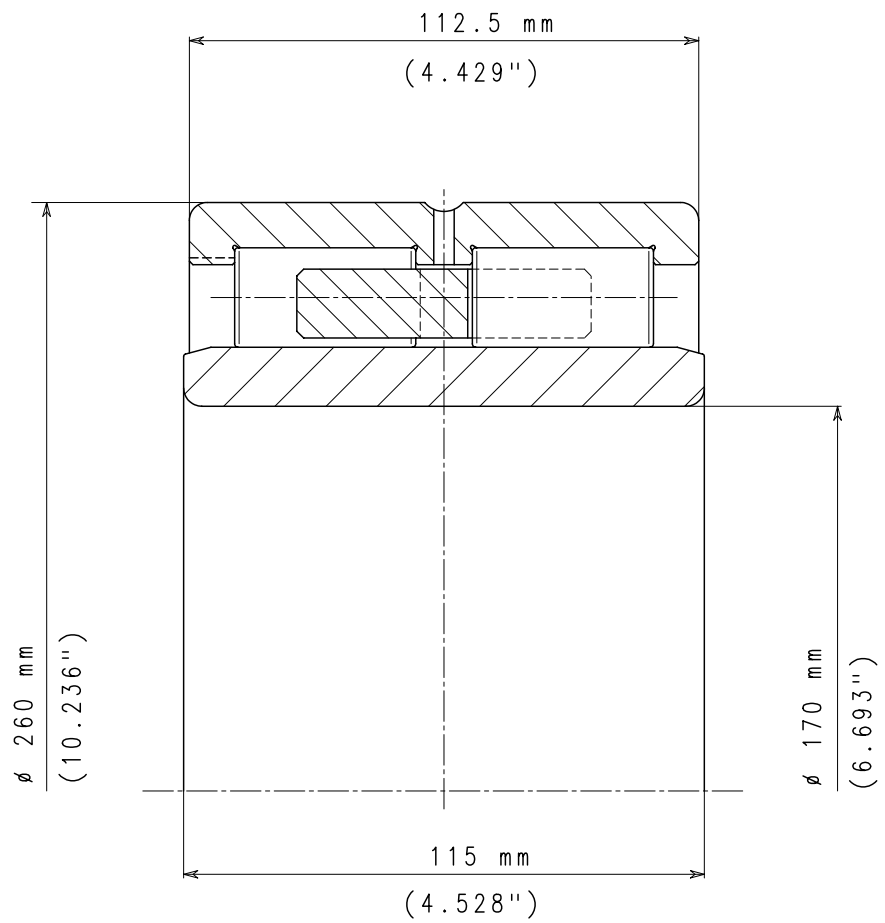
**INTERNAL CLEARANCE
0.300/0.340 mm
(0.0118/0.0134")**



**CORRUGATOR MODEL
PETERS MULTISTAR
PETERS SINGLESTAR**

**FARO PART NUMBER
2.2022**

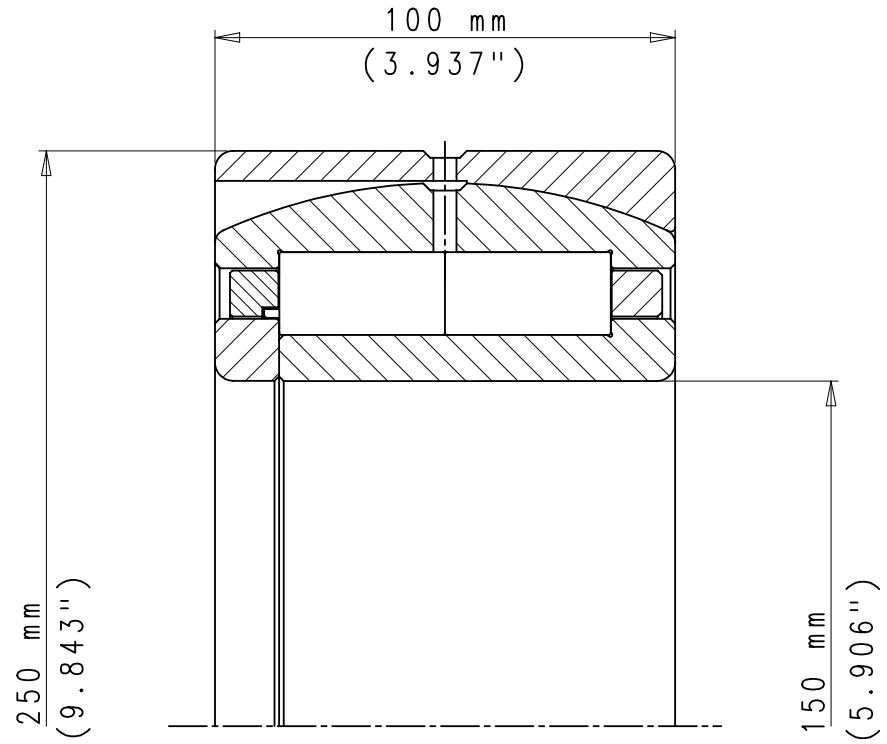
**INTERNAL CLEARANCE
0.250/0.300 mm
(0.0098/0.0118")**



CORRUGATOR MODEL
MHI 50 C/D/E/F/G
MHI 60 PASER G/H

FARO PART NUMBER
2.2004

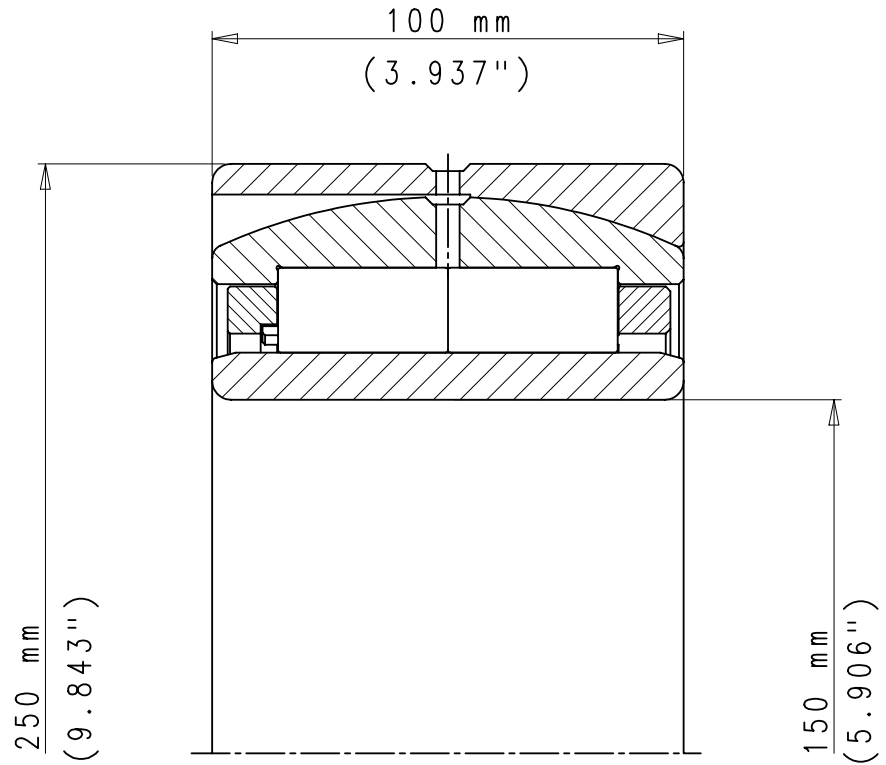
INTERNAL CLEARANCE
0.260/0.300 mm
(0.0102/0.0118")



CORRUGATOR MODEL
MHI 50 C/D/E/F/G
MHI 60 PASER G/H

FARO PART NUMBER
2.2005

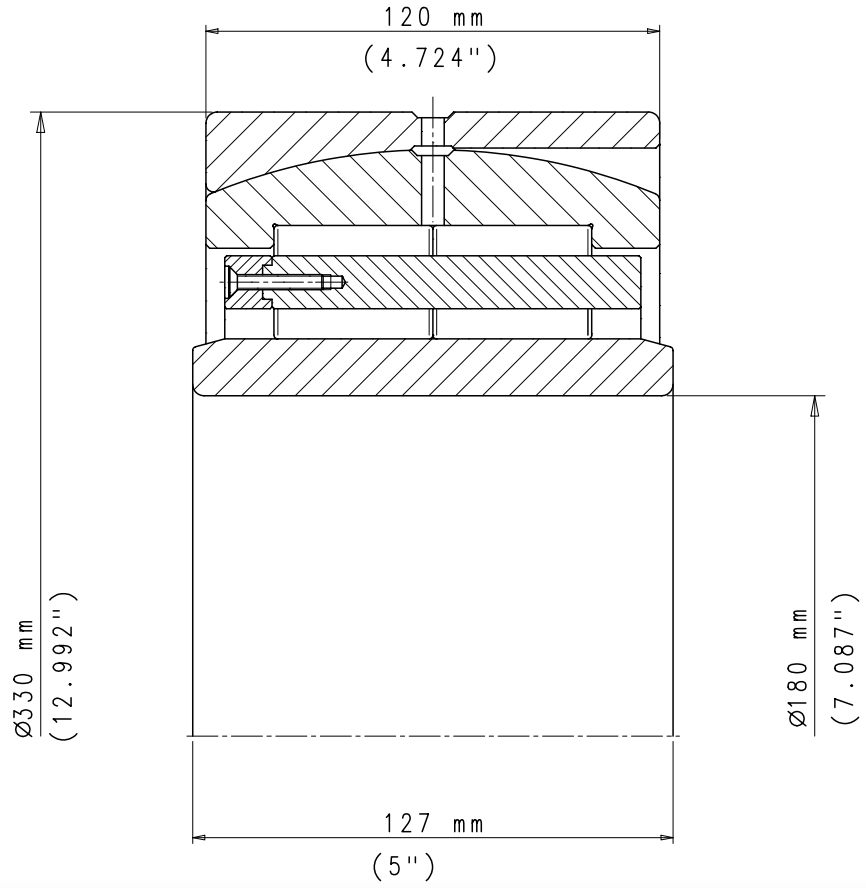
INTERNAL CLEARANCE
0.260/0.300 mm
(0.0102/0.0118")



**CORRUGATOR MODEL
MHI 60 PASER G**

**FARO PART NUMBER
2.2014**

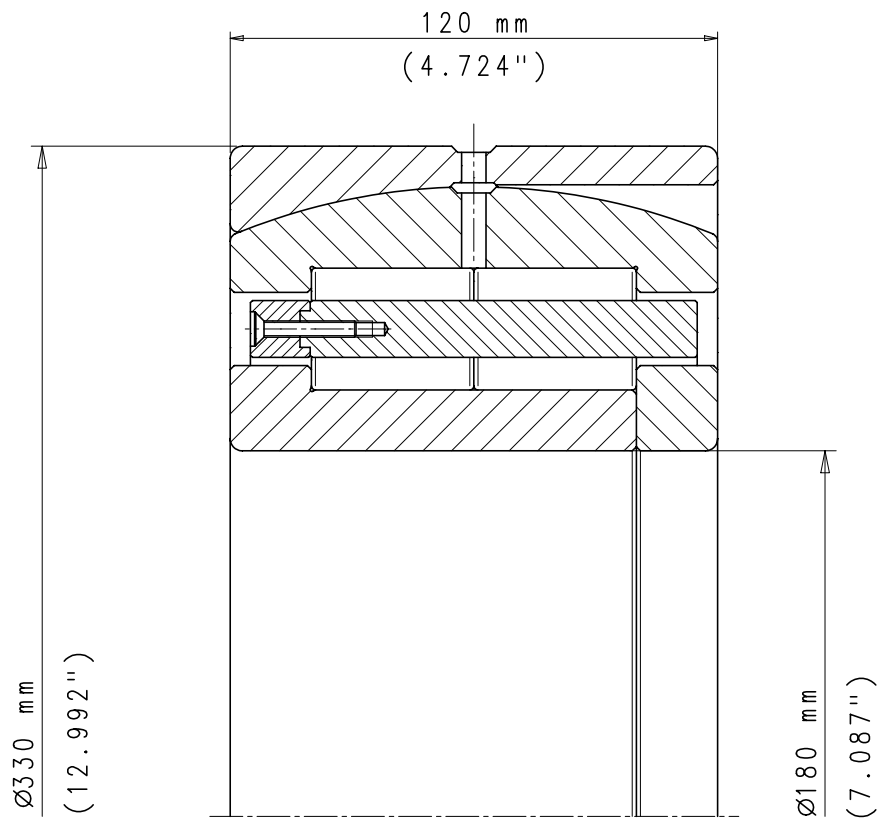
**INTERNAL CLEARANCE
0.280/0.310 mm
(0.0110/0.0122")**



**CORRUGATOR MODEL
MHI 60 PASER G**

**FARO PART NUMBER
2.2015**

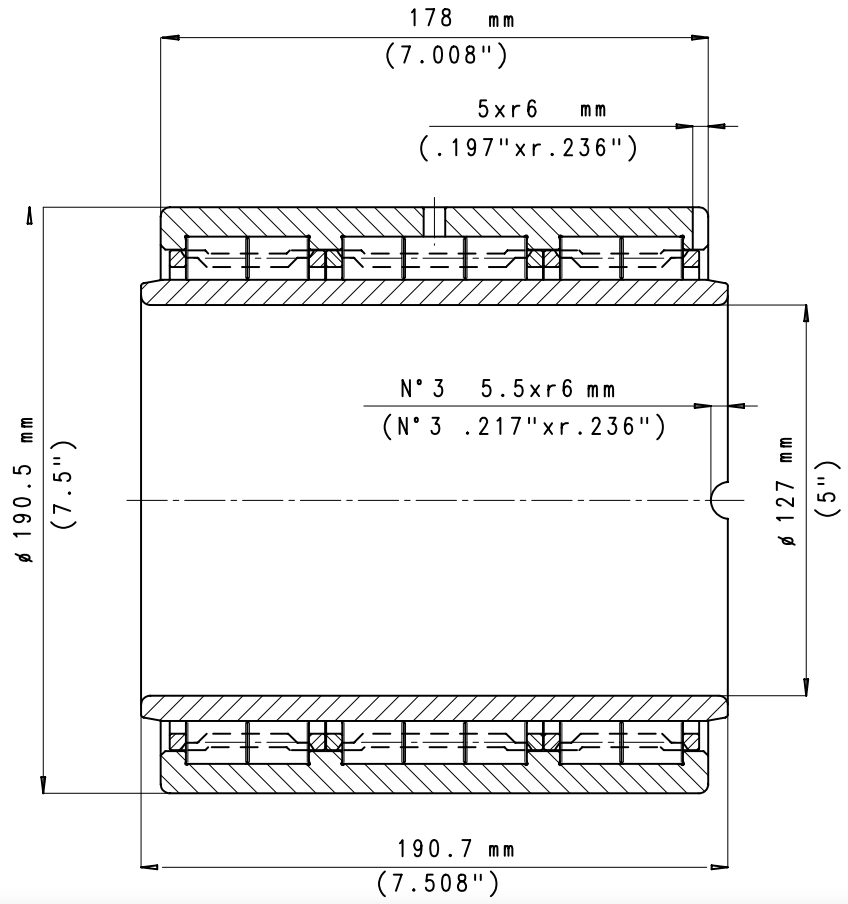
**INTERNAL CLEARANCE
0.280/0.310 mm
(0.0110/0.0122")**



**CORRUGATOR MODEL
PETERS EHU**

**FARO PART NUMBER
2.0045/1**

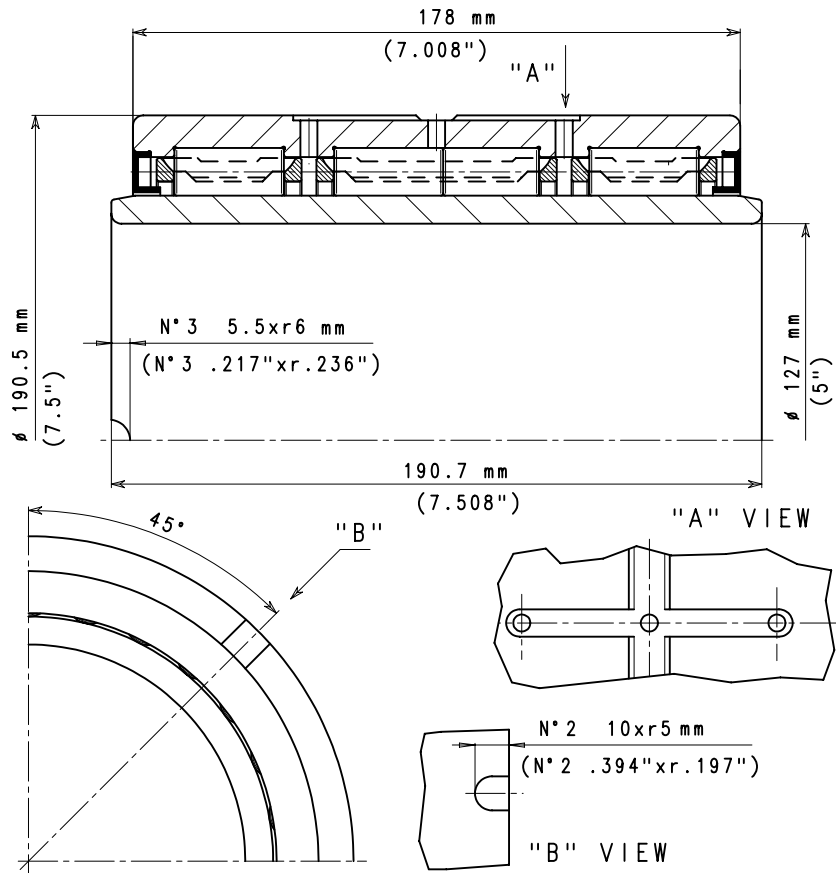
**INTERNAL CLEARANCE
0.265/0.305 mm
(0.0104/0.0120")**



**CORRUGATOR MODEL
PETERS EHU**

**FARO PART NUMBER
2.0045/1 GZZ**

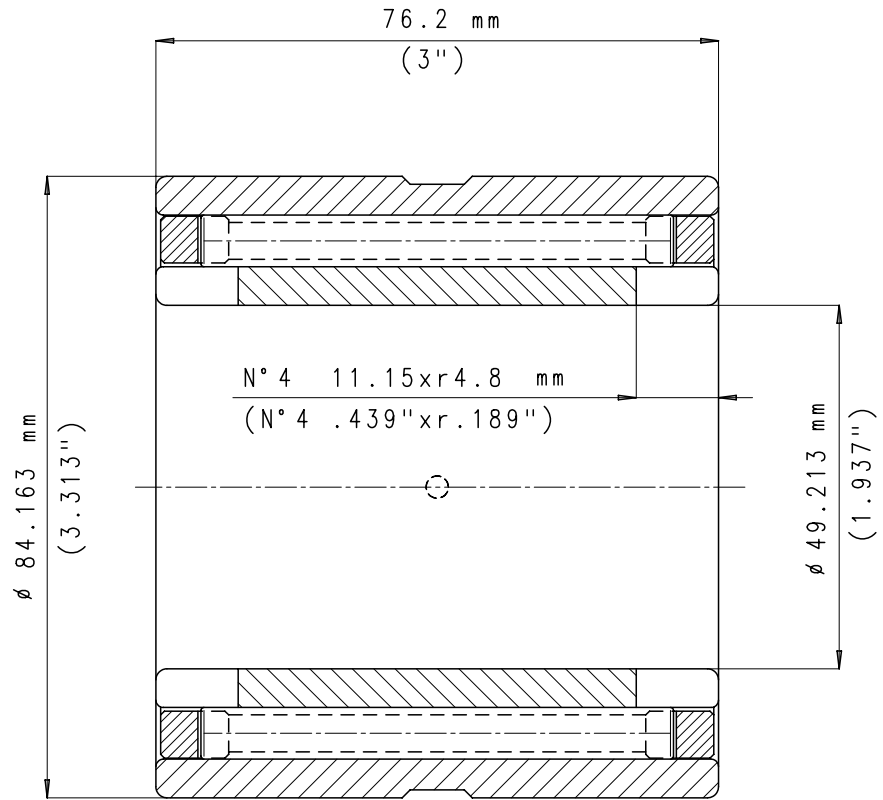
**INTERNAL CLEARANCE
0.265/0.305 mm
(0.0104/0.0120")**



**CORRUGATOR MODEL
SIMON 245**

**FARO PART NUMBER
2.0986**

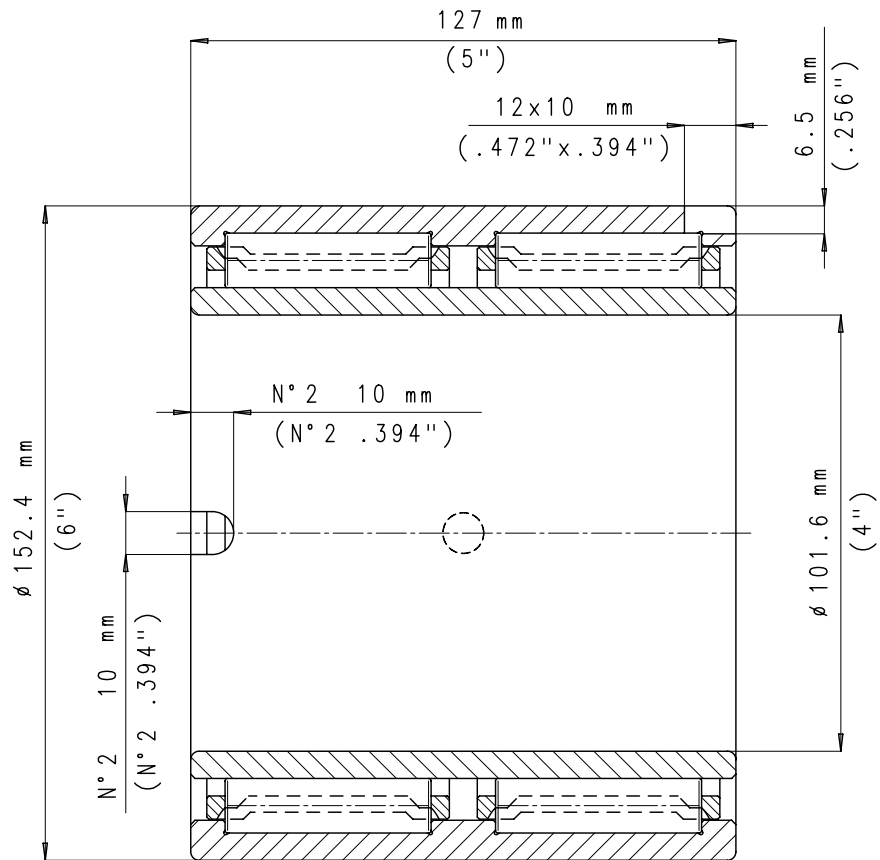
**INTERNAL CLEARANCE
0.045/0.090 mm
(0.0018/0.0035")**



**CORRUGATOR MODEL
S&S 2HKD268-A
S&S 2HKE268-A**

**FARO PART NUMBER
2.0099**

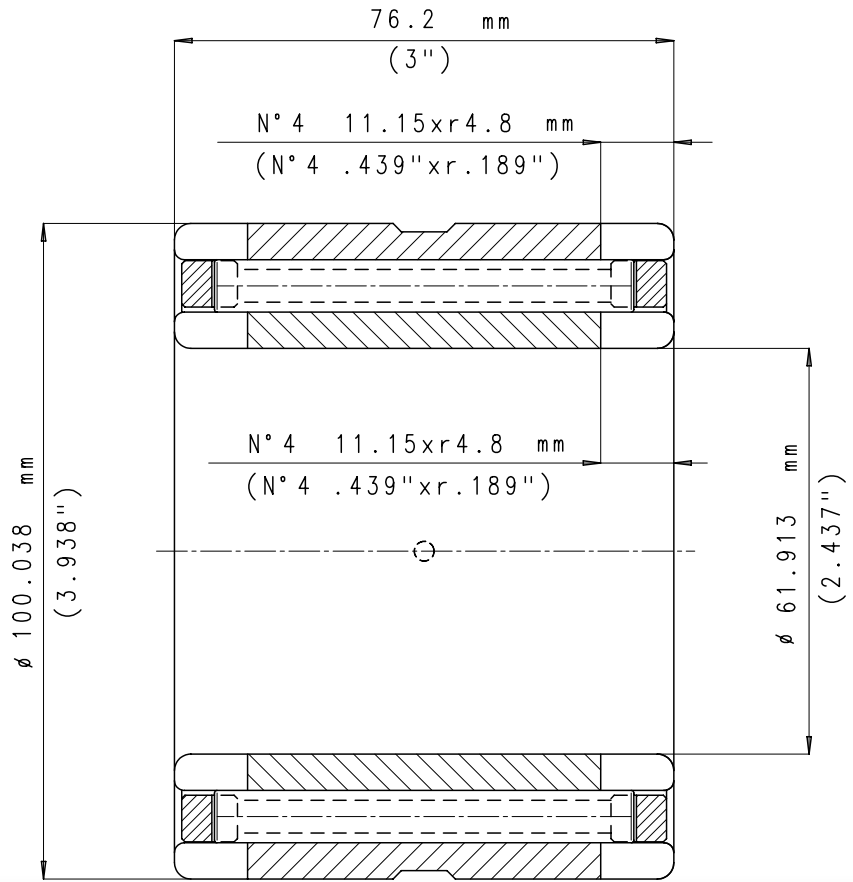
**INTERNAL CLEARANCE
0.180/0.235 mm
(0.0071/0.0093")**



**CORRUGATOR MODEL
SIMON 245**

**FARO PART NUMBER
2.0995**

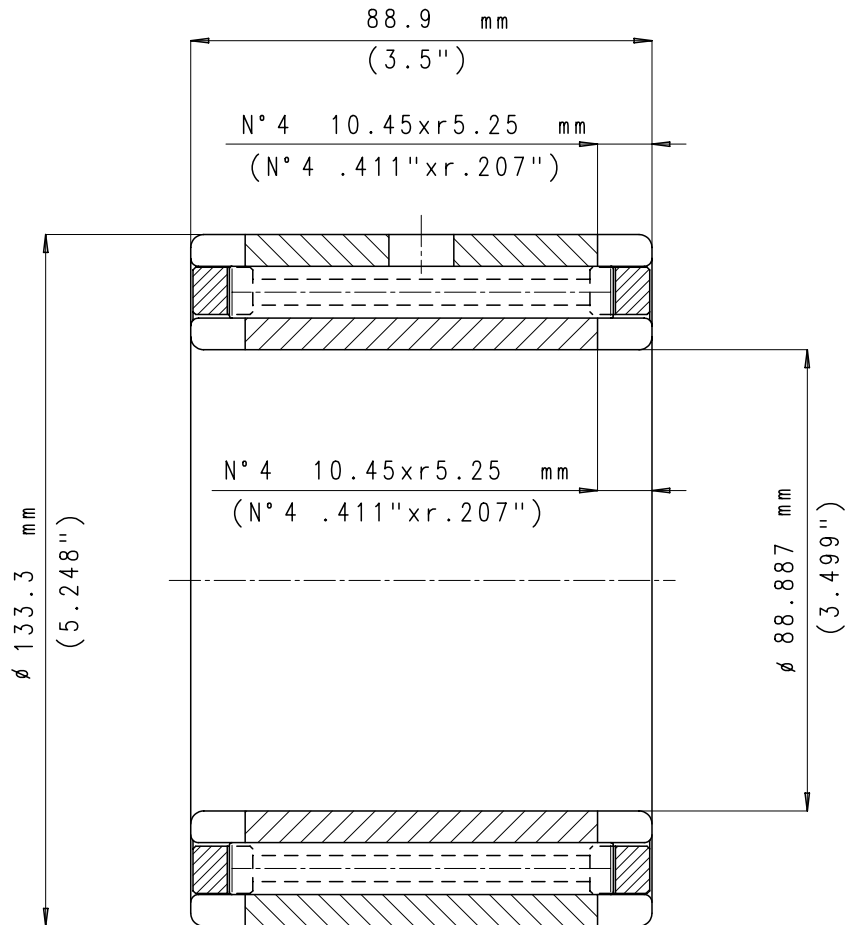
**INTERNAL CLEARANCE
0.045/0.090 mm
(0.0018/0.0035")**



**CORRUGATOR MODEL
SIMON 245**

**FARO PART NUMBER
2.0996**

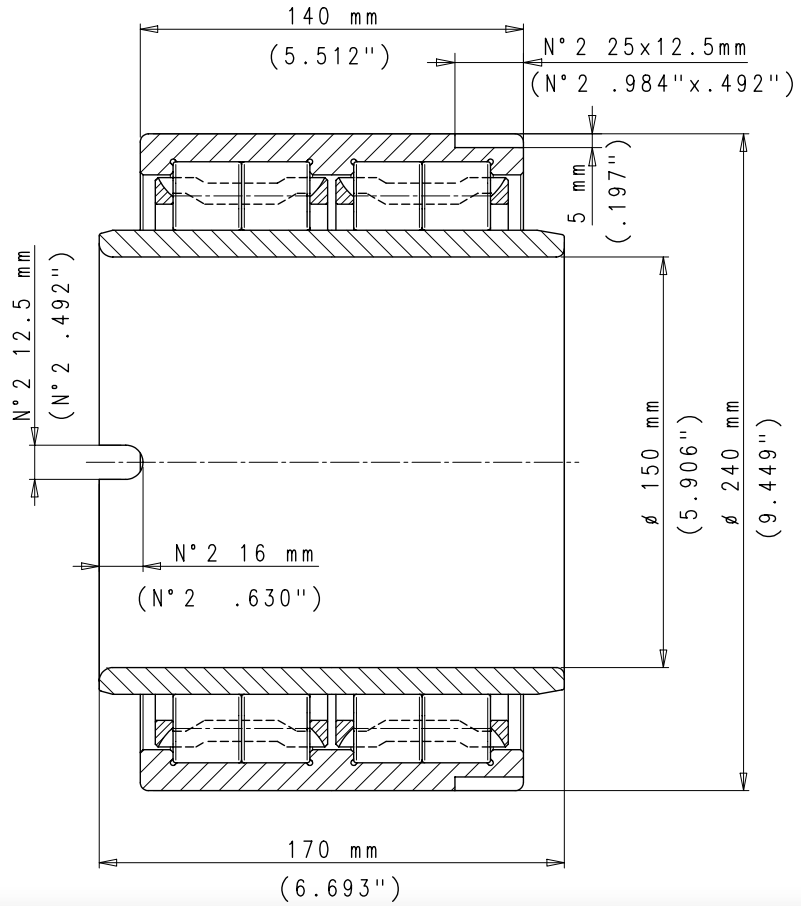
**INTERNAL CLEARANCE
0.250/0.305 mm
(0.0098/0.0120")**



**CORRUGATOR MODEL
SIMON 300 PSF**

**FARO PART NUMBER
2.2002**

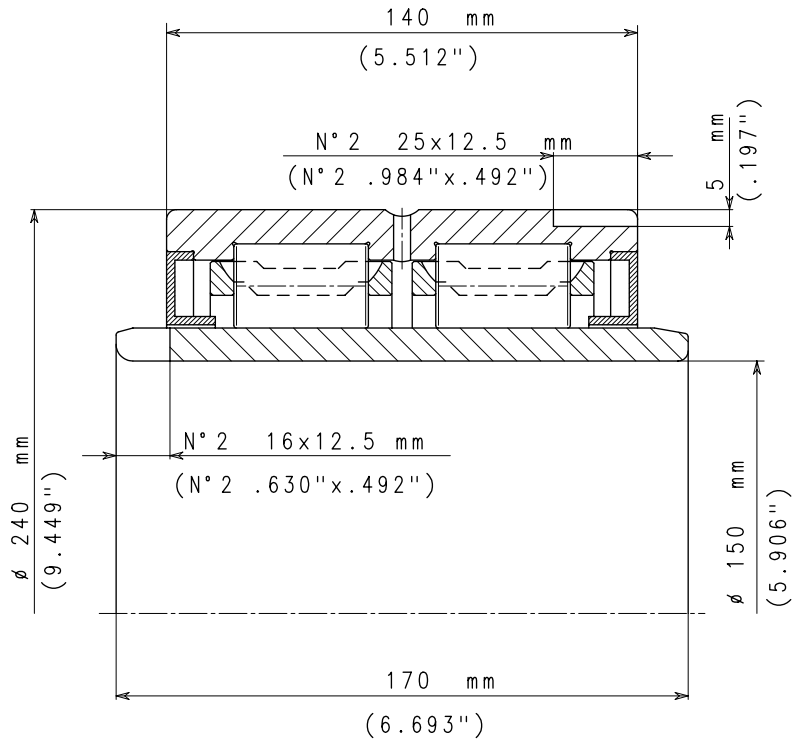
**INTERNAL CLEARANCE
0.300/0.350 mm
(0.0118/0.0138")**



**CORRUGATOR MODEL
SIMON 300 PSF**

**FARO PART NUMBER
2.2002 GZZ**

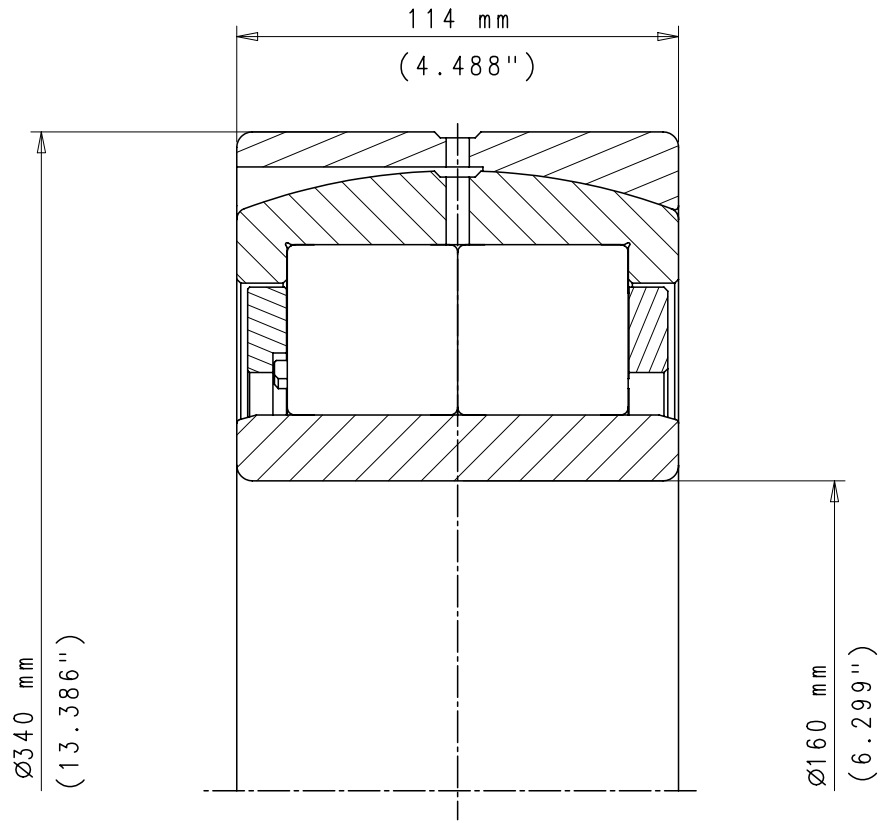
**INTERNAL CLEARANCE
0.300/0.350 mm
(0.0118/0.0138")**



CORRUGATOR MODEL
MHI 60 PASER H

FARO PART NUMBER
2.2981

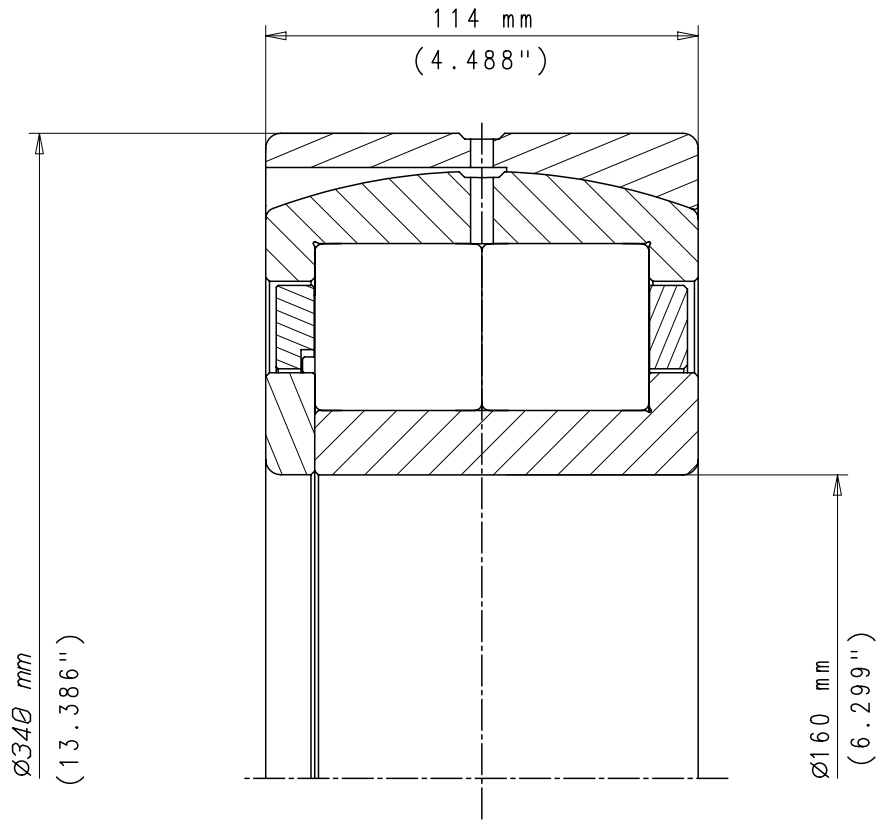
INTERNAL CLEARANCE
0.180/0.230 mm
(0.0071/0.0091")



CORRUGATOR MODEL
MHI 60 PASER H

FARO PART NUMBER
2.2982

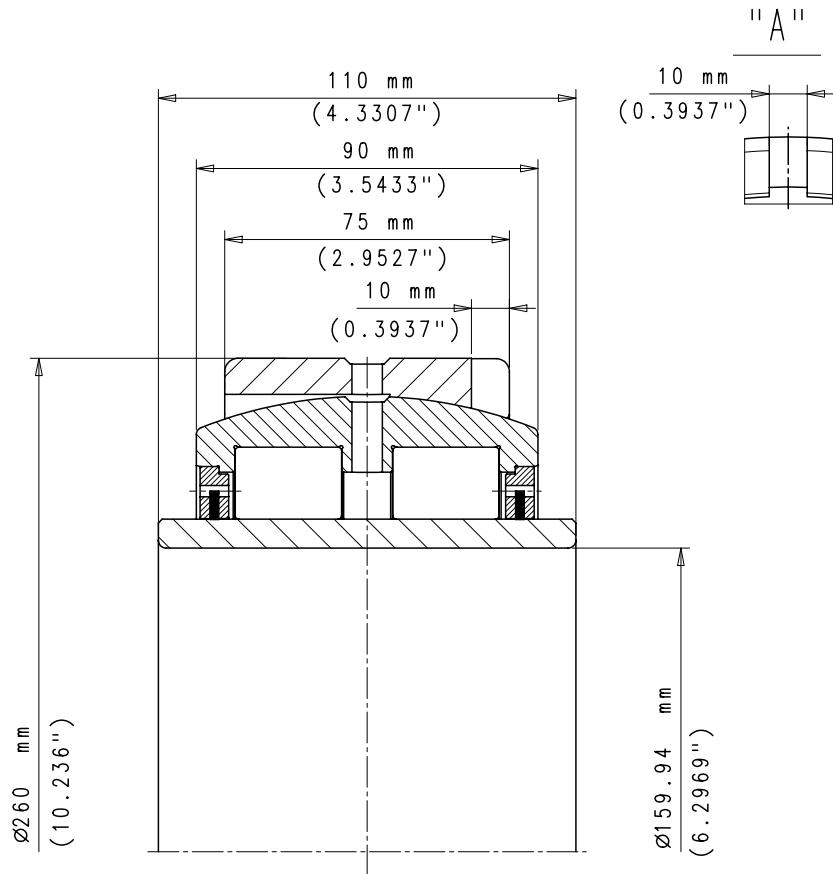
INTERNAL CLEARANCE
0.180/0.230 mm
(0.0071/0.0091")



**CORRUGATOR MODEL
PETERS**

**FARO PART NUMBER
2.2970**

**INTERNAL CLEARANCE
0.250/0.350 mm
(0.0098/0.0138")**





FARO INDUSTRIALE S.R.L.
VIA TORINO 19
Z.I. 29010 CALENDASCO (PC) - ITALIA

TEL.: +39 (0523) 769849
FAX: +39 (0523) 760315

MAIL: sales@faro-spa.it
WEB: www.faro-bearings.com