



THDS (Take-Up) Series - Steel

THDS Take-Up Bearing Housings

These housings are traditionally used for take-up pulleys in conveyor belt tensioning applications. The channels on the sides of the housings provide smooth sliding within guide rails. Fork arms are extended at one end to attach an anchor pin.

They are available in Cast Iron, SG Iron, Cast Steel and also Flame-Cut Steel for quicker delivery.

Machined to suit any bearing size, located or non-located, through or blank shaft.

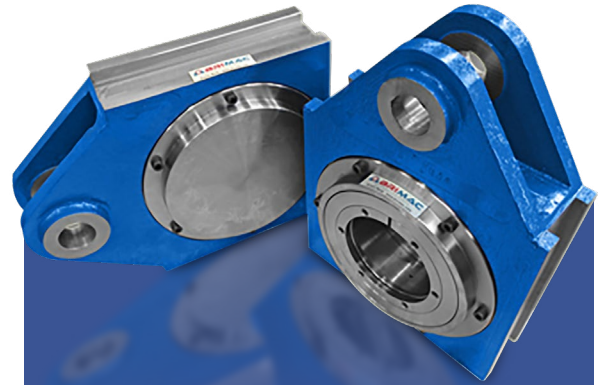
These housings are non-split type with covers at both sides. Supplied with taconite seals as standard but other sealing configurations can easily be adapted.

These housings are designed for grease lubrication. A grease nipple is normally fitted to the back end of the housing to grease the bearing. This grease point or points can be moved to suit the application.

These housings can also be drilled for Temperature sensor and Vibration monitoring fittings.

Special SPA and THM units are also available on request. Bri-Mac manufacture these units with a felt or taconite sealing arrangement.

Any special sizes can be designed & produced.



SUPPLEMENTARY DESIGNATIONS:

Housings for bearing with adapter sleeve for plain cylindrical shaft	Standard
Housings for shaft end, with end cover	A
Housings for non-locating bearing	L
Housings for Through shaft, with end cover	B
Housings for locating bearing	F

SEALS:

Standard labyrinth seal & sealing collars are supplied with the housings. However, we can also supply special sealing configurations on request.

EYE BOLT:

For anchoring purpose, a sturdy hole is provided on one side of housing, instead of an eye bolt.

MATERIALS:

THD housings can be supplied in following materials.

- Cast steel **THDS**
- Grey cast iron **THD**
- Spheroidal Graphite Iron (ductile) **THDD**

NOTE: it is important to specify the bearing housing requirement as-

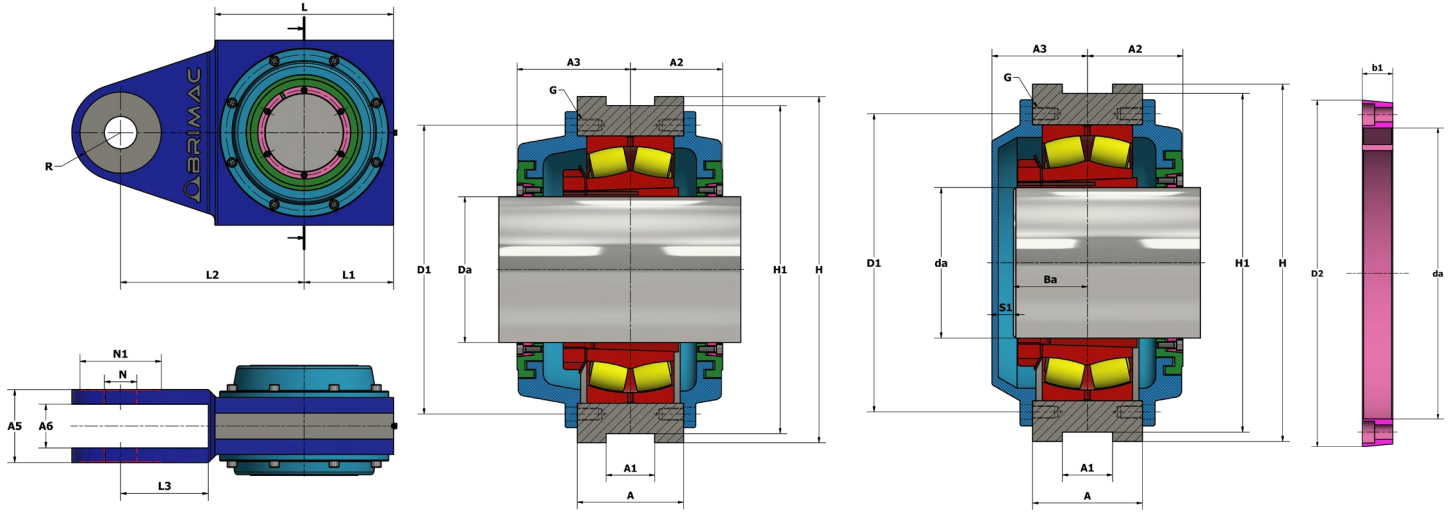
- (1) **AL** Housings for shaft end, with end cover, for non-locating bearing.
- (2) **AF** Housings for shaft end, with end cover, for locating bearing.
- (3) **BL** Housings for through shaft, for non-locating bearing.
- (4) **BF** Housings for through shaft, for locating bearing.

“BEARING HOUSING SOLUTIONS – WORLDWIDE”





THDS (Take-Up) Series - Steel

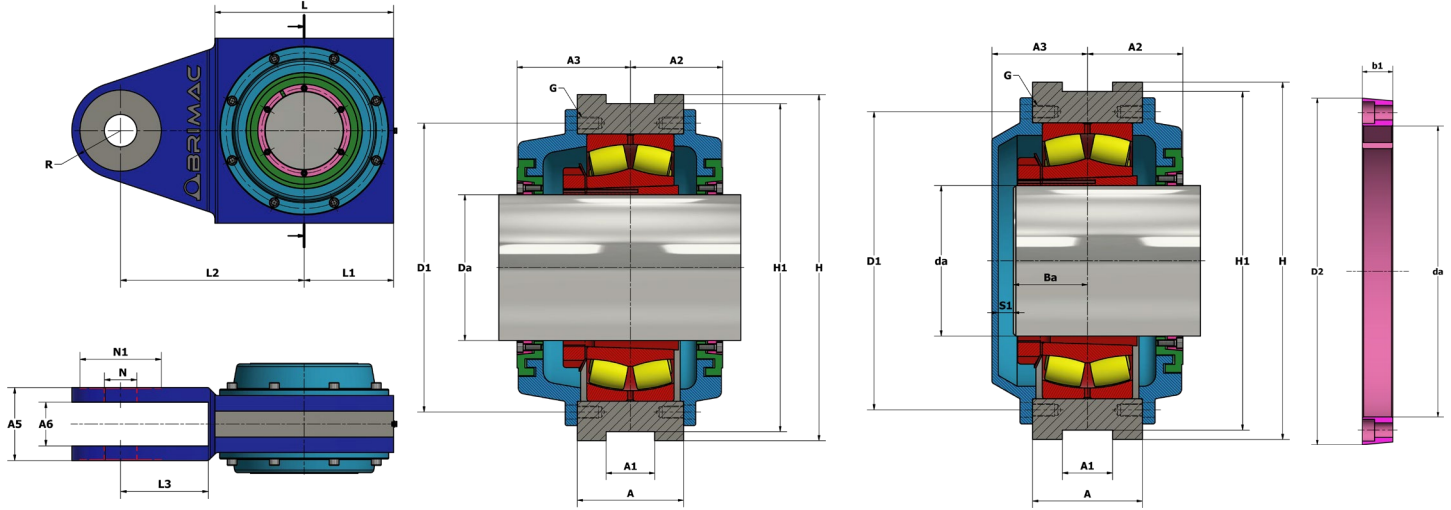


Bri-Mac Part No	Shaft Dia	Dimensions (mm)																				Appropriate Bearing	Bearing No.		
		da	A	A1	A2	A3	A4	A5	A6	Ba	D1	H	H1	L	L1	L2	L3	N	N1	R	s1			G	D2
THDS 2211	50	60	34	49	-	38	42	22	27	115	150	135	150	75	105	30	20	40	30	5	M8	68	15	22211 EK	H 311
THDS 2212	55	66	43	50	-	41	50	26	30	125	165	150	165	82.5	120	37.5	25	50	35	5	M8	73	15	22212 EK	H 312
THDS 2213	60	78	53	50	-	53	66	30	35	135	180	155	160	80	145	65	30	60	40	11	M8	82	15	22213 CCK	H 313
THDS 2216	70	78	53	62	70	49	66	30	36	155	200	175	180	90	155	65	30	60	40	6	M8	98	18	22216 EK	H 316
THDS 2218	80	78	53	67	-	63	66	30	40	180	230	200	210	105	170	65	30	60	40	16	M8	108	18	22218 EK	H 318
THDS 2220	90	69	40	76	92	70	70	36	45	195	250	220	235	117.5	185	67.5	35	70	40	18	M8	118	18	22220 EK	H 320
THDS 2222	100	60	34	49	-	38	42	22	27	115	150	135	150	75	105	30	20	40	30	5	M8	68	15	22211 EK	H 311
THDS 3222		66	43	50	-	41	50	26	30	125	165	150	165	82.5	120	37.5	25	50	35	5	M8	73	15	22212 EK	H 312
THDS 2224	60	78	53	50	-	53	66	30	35	135	180	155	160	80	145	65	30	60	40	11	M8	82	15	22213 CCK	H 313
THDS 3224		78	53	62	70	49	66	30	36	155	200	175	180	90	155	65	30	60	40	6	M8	98	18	22216 EK	H 316
THDS 3226	115	78	53	67	-	63	66	30	40	180	230	200	210	105	170	65	30	60	40	16	M8	108	18	22218 EK	H 318
THDS 2228	125	69	40	76	92	70	70	36	45	195	250	220	235	117.5	185	67.5	35	70	40	18	M8	118	18	22220 EK	H 320
THDS 3228		60	34	49	-	38	42	22	27	115	150	135	150	75	105	30	20	40	30	5	M8	68	15	22211 EK	H 311
THDS 3030	135	66	43	50	-	41	50	26	30	125	165	150	165	82.5	120	37.5	25	50	35	5	M8	73	15	22212 EK	H 312
THDS 3230		78	53	50	-	53	66	30	35	135	180	155	160	80	145	65	30	60	40	11	M8	82	15	22213 CCK	H 313
THDS 3132	140	78	53	62	70	49	66	30	36	155	200	175	180	90	155	65	30	60	40	6	M8	98	18	22216 EK	H 316
THDS 3232		78	53	67	-	63	66	30	40	180	230	200	210	105	170	65	30	60	40	16	M8	108	18	22218 EK	H 318





THDS (Take-Up) Series - Steel



Bri-Mac Part No	Shaft Dia	Dimensions (mm)																				Appropriate Bearing	Bearing No.		
		da	A	A1	A2	A3	A4	A5	A6	Ba	D1	H	H1	L	L1	L2	L3	N	N1	R	s1			G	D2
THDS 3034	150	69	40	76	92	70	70	36	45	195	250	220	235	1175	185	675	35	70	40	18	M8	118	18	22220 EK	H 320
THDS 3134		78	53	50	-	53	66	30	35	135	180	155	160	80	145	65	30	60	40	11	M8	82	15	22213 CCK	H 313
THDS 3236	160	66	43	50	-	41	50	26	30	125	165	150	165	82.5	120	37.5	25	50	35	5	M8	73	15	22212 EK	H 312
THDS 3038	170	78	53	50	-	53	66	30	35	135	180	155	160	80	145	65	30	60	40	11	M8	82	15	22213 CCK	H 313
THDS 3040	180	78	53	62	70	49	66	30	36	155	200	175	180	90	155	65	30	60	40	6	M8	98	18	22216 EK	H 316
THDS 3140		78	53	67	-	63	66	30	40	180	230	200	210	105	170	65	30	60	40	16	M8	108	18	22218 EK	H 318
THDS 3240	200	69	40	76	92	70	70	36	45	195	250	220	235	1175	185	675	35	70	40	18	M8	118	18	22220 EK	H 320
THDS 3044		120	65	107	142	107	200	70	80	370	480	440	430	210	325	100	60	100	80	17	M16	246	25	23044 CCK/W33	OH 3044 H
THDS 3144	240	150	103	135	160	135	144	74	100	420	510	480	470	235	530	260	100	175	120	25	M16	246	25	23144 CCK/W33	OH 3144 H
THDS 3244		175	103	148	183	133	240	173	112	445	540	500	520	260	575	245	100	175	150	11	M20	246	25	23244 CCK/W33	OH 2344 H
THDS 3148	220	152	65	148	178	138	215	123	106	455	540	500	520	260	515	250	100	250	150	22	M20	266	25	23148 CCK/W33	OH 3148 H
THDS 3248		190	103	148	188	148	240	173	122	490	580	540	560	280	600	250	100	175	150	16	M20	266	25	23248 CCK/W33	OH 2348 H
THDS 3152	240	175	80	152	187	152	225	135	118	490	570	540	550	275	656	270	100	250	150	24	M20	286	25	23152 CCK/W33	OH 3152 H
THDS 3252		205	103	167	208	158	240	173	132	540	610	570	590	305	615	220	100	200	150	16	M20	286	25	23252 CCK/W33	OH 2352 H
THDS 3256	260	210	123	178	218	163	240	173	135	555	650	610	630	315	630	220	100	175	150	16	M24	306	25	23256 CCK/W33	OH 2356 H
THDS 3160	280	195	103	165	210	170	240	173	125	550	650	610	625	312	630	250	100	240	150	35	M24	326	25	23160 CCK/W33	OH 3160 H
THDS 3260		230	123	182	222	187	240	173	142	600	670	630	670	335	650	220	100	175	150	33	M24	326	25	23260 CCK/W33	OH 3260 H

